

Interesting Case

Miguel G. Echevarria, MD

Emory MSK Radiology

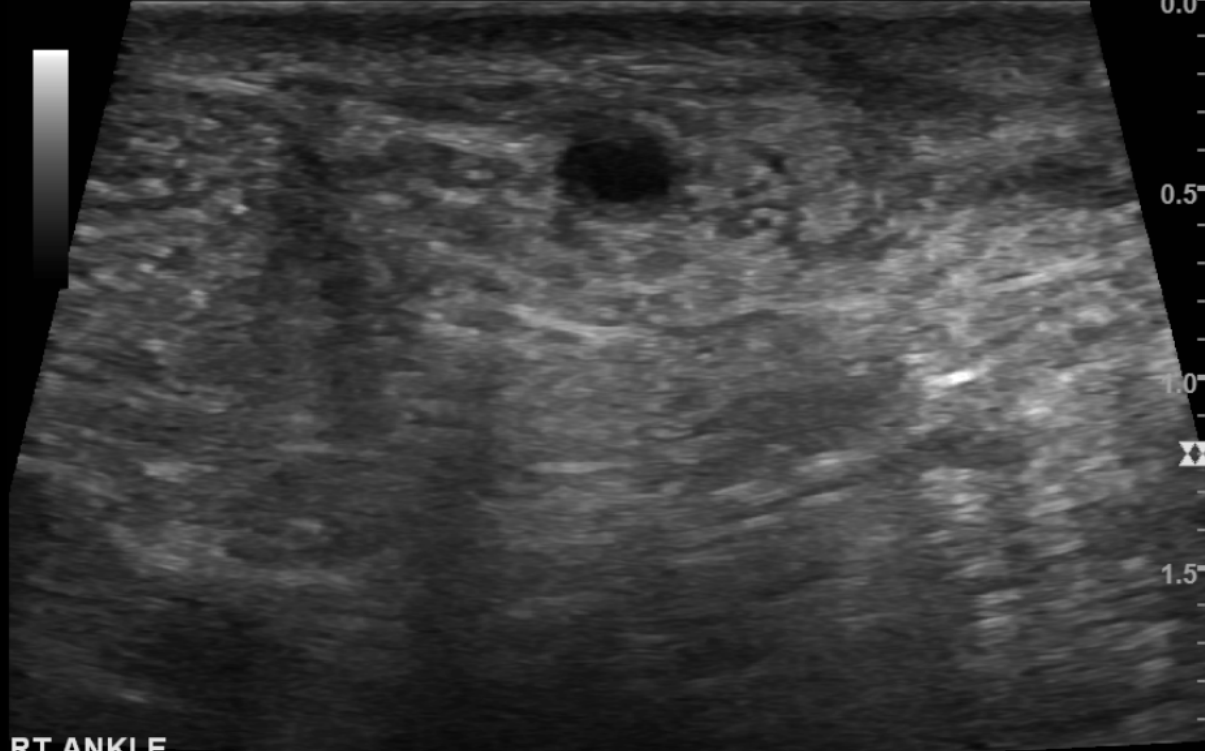


- 66 year old female with history of multiple foot surgeries presenting with lateral foot pain.



* Not the actual patient

LOGIQ
S8

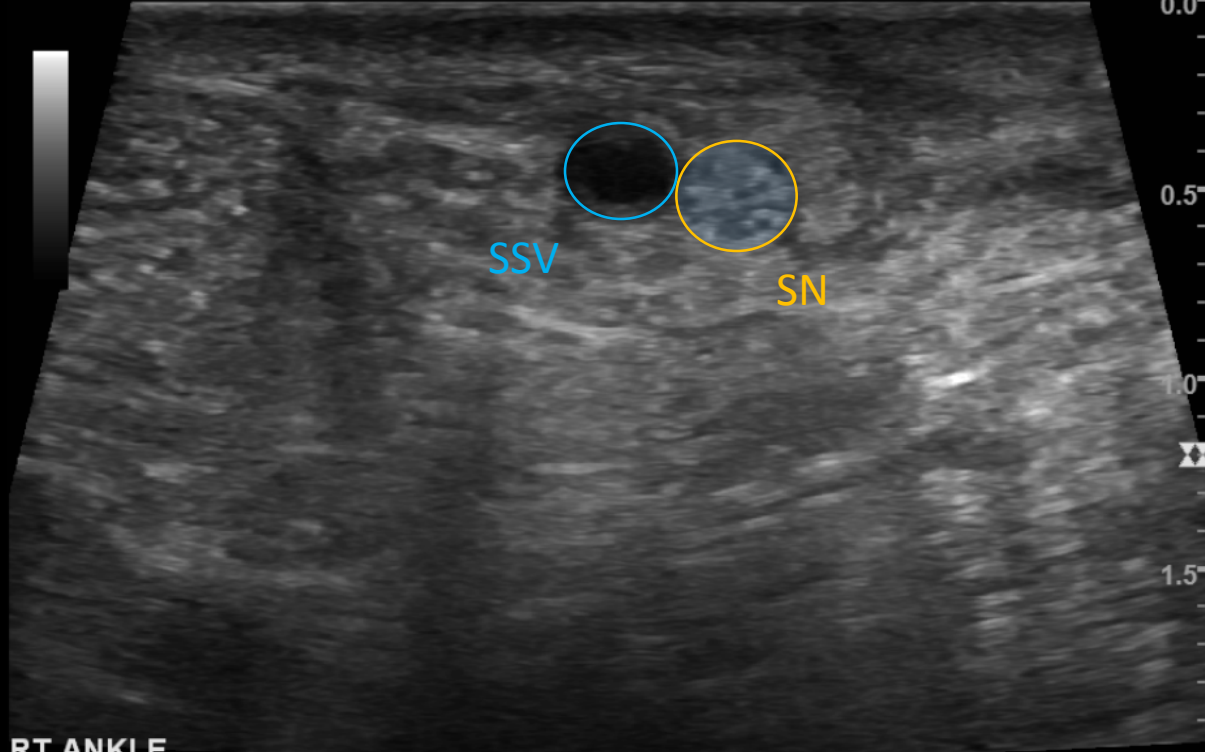


FR 68
AO% 100
- CHI
- Frq 18.0
- Gn 64
- S/A 3/3
- Map A/0
0.5 D 2.0
- DR 69

RT ANKLE
SURAL NERVE



LOGIQ
S8



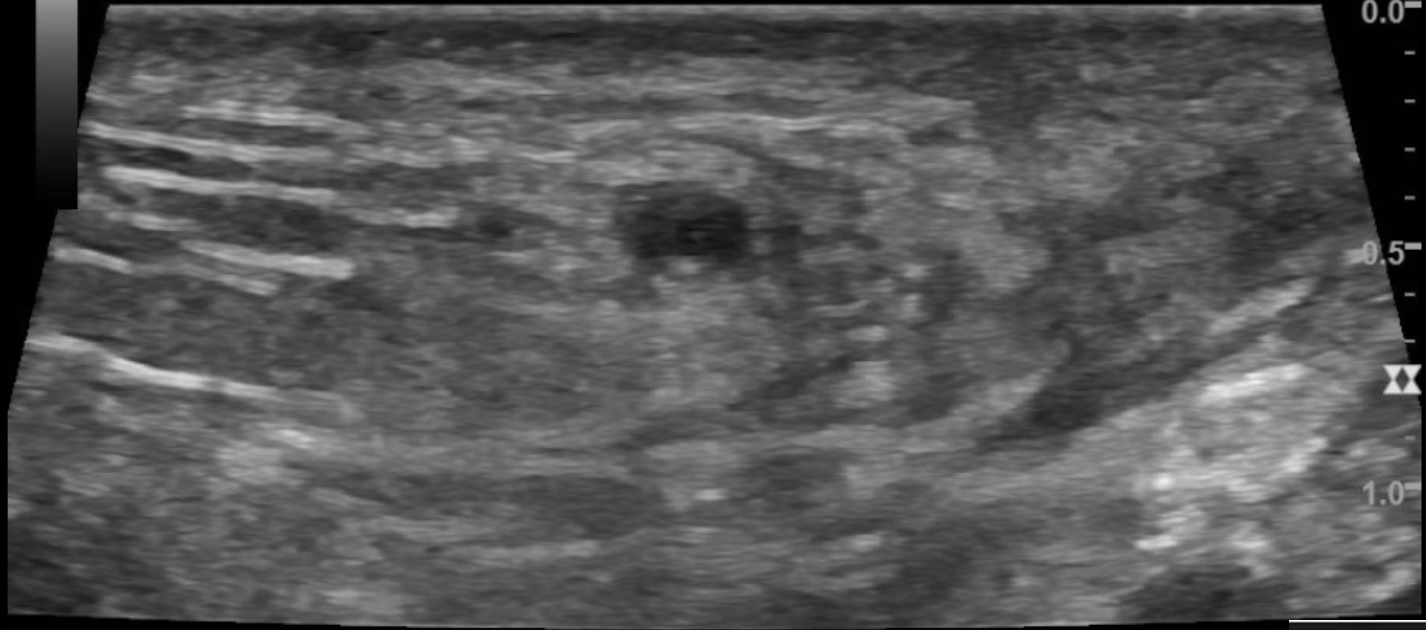
RT ANKLE
SURAL NERVE

FR 68
AO% 100
0.0
- CHI
- Frq 18.0
- Gn 64
- S/A 3/3
- Map A/0
0.5
- D 2.0
- DR 69

1.0
1.5
2.0



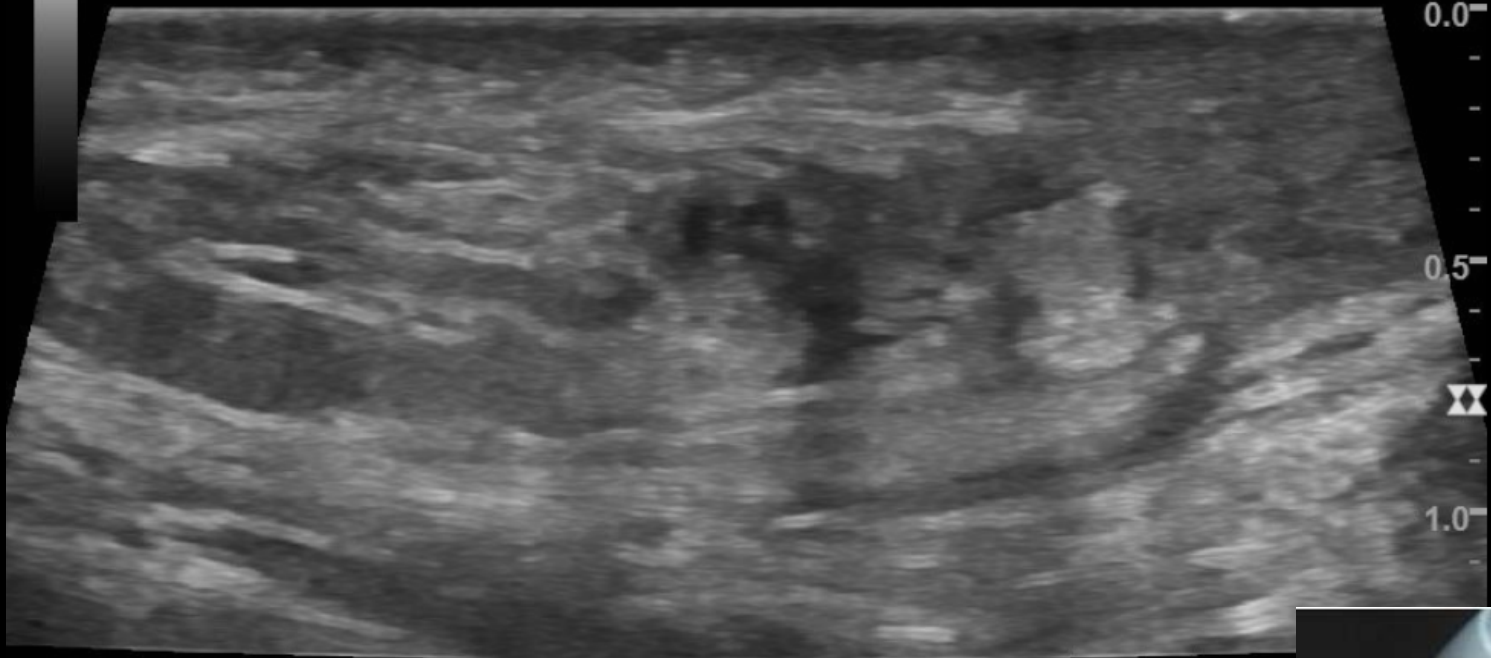
LOGIQ
S8



RT ANKLE
SURAL NERVE
PROX TO DISTAL



LOGIQ
S8



**RT ANKLE
SURAL NERVE
PROX TO DISTAL**

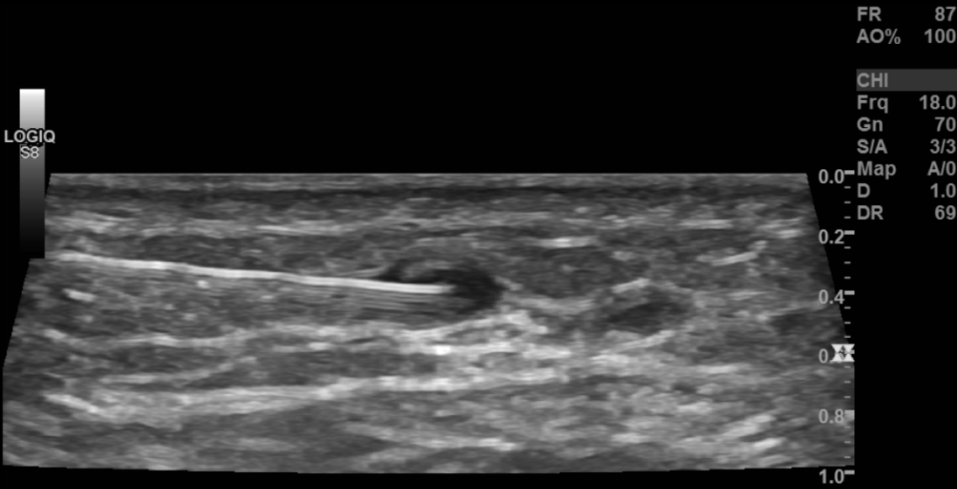


LOGIQ
S8

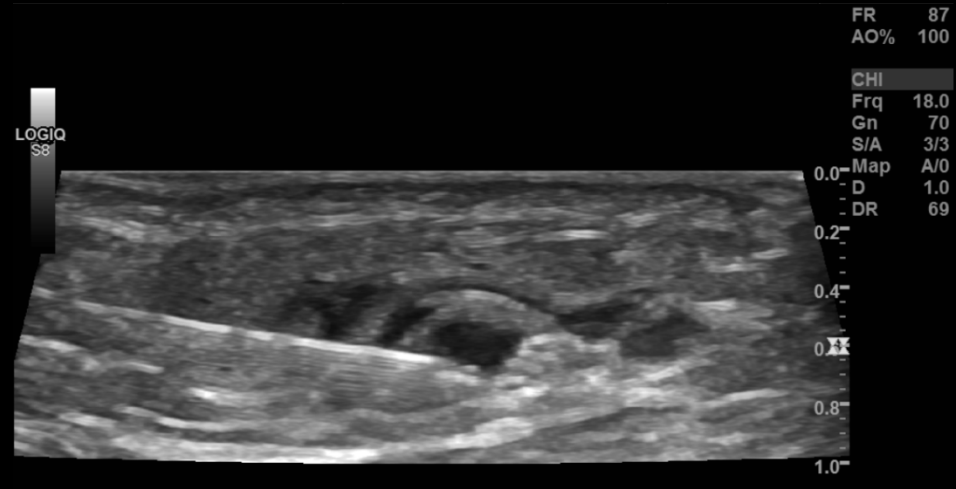


RT ANKLE
SURAL NERVE
PROX TO DISTAL





RT ANKLE
SURAL NERVE BLOCK



RT ANKLE
SURAL NERVE BLOCK

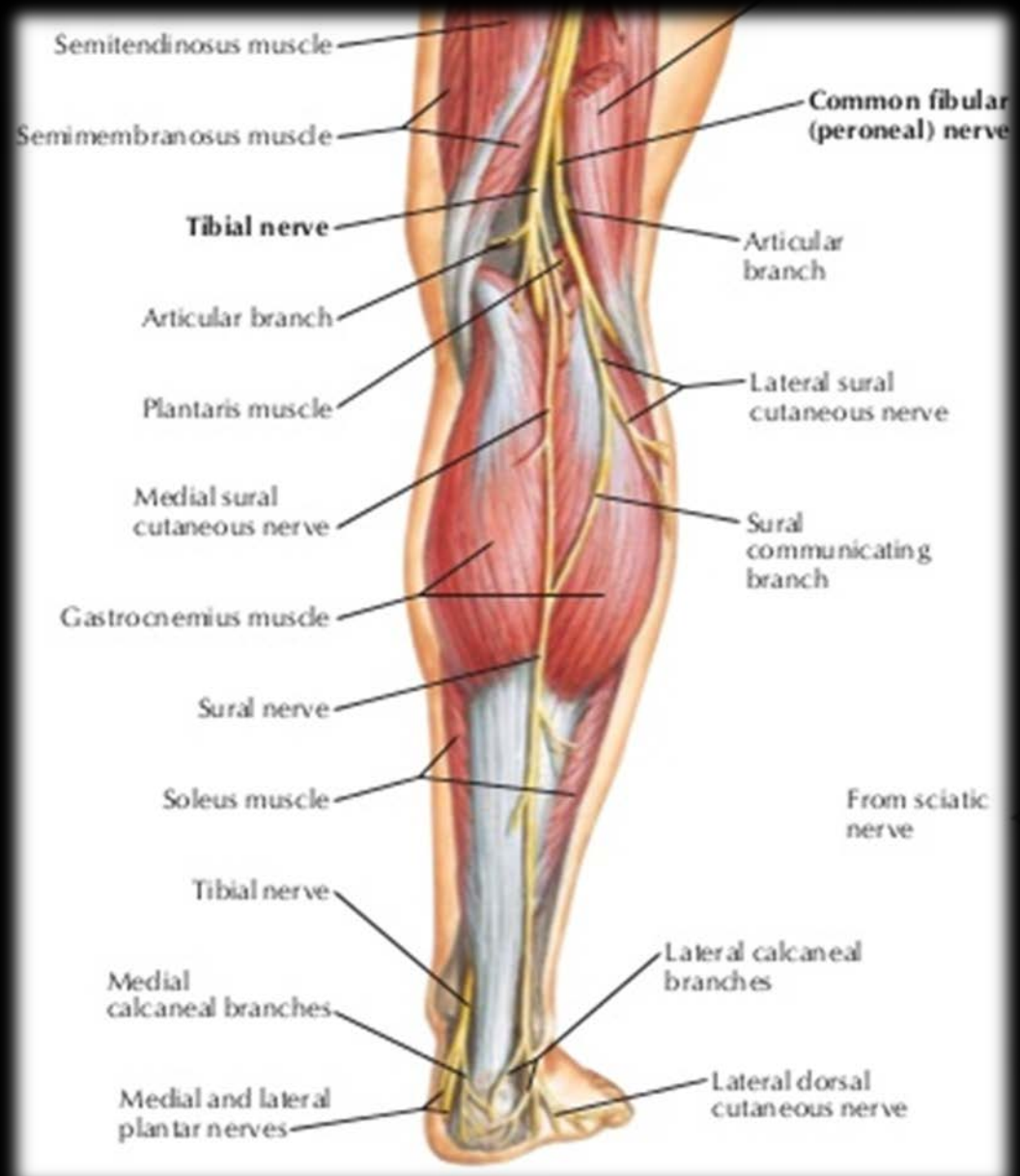
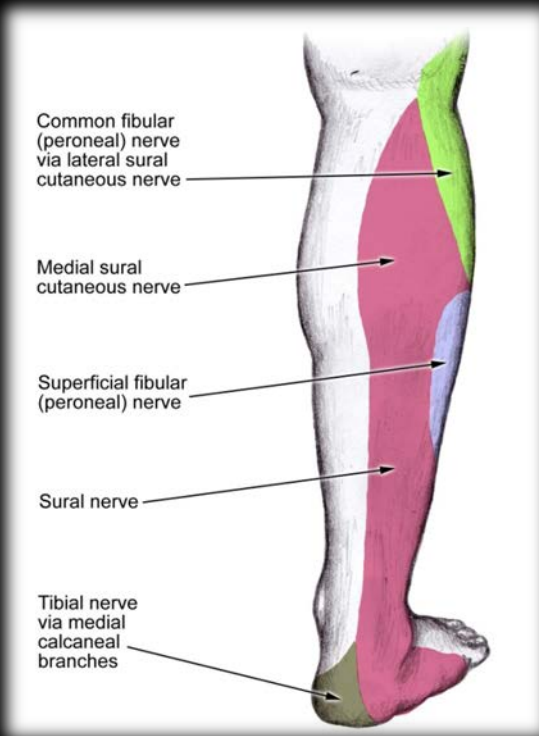


RT ANKLE
SURAL NERVE BLOCK

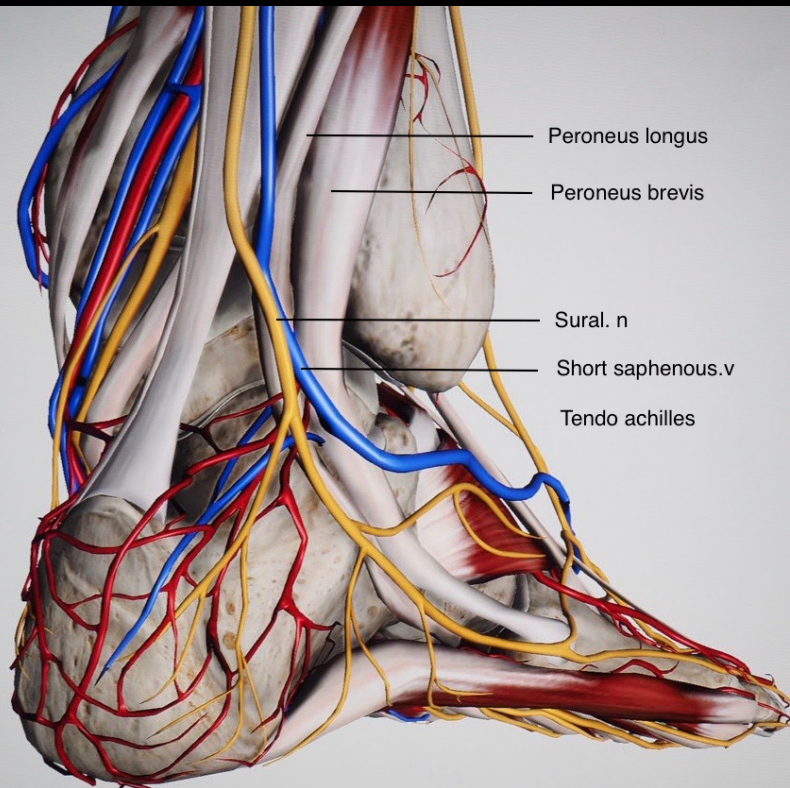


Sural Nerve

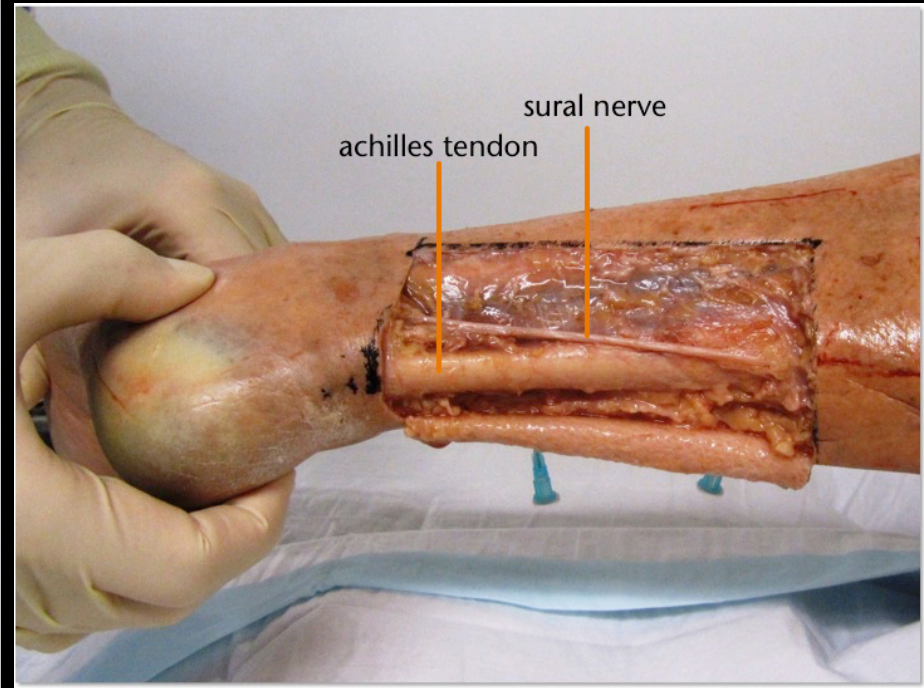
- Sensory nerve in the calf region (sura) of the leg.



Sural Nerve



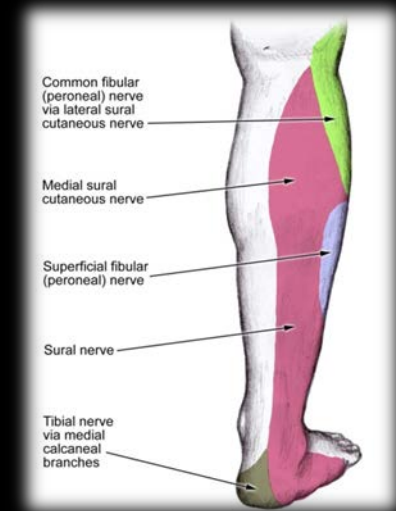
http://www.bats.ac.nz/detail-foot_and_ankle_surgery-2



<https://nojiam.com/2017/05/10/the-sural-nerve-the-appendix-of-the-nervous-system/>

Sural Nerve

- May be susceptible to mechanical impingement or entrapment, injured secondary to trauma (fibular fracture) or iatrogenic.
- Burning, numbness, or aching at the posterolateral leg.
- Nerve block
 - Determine site of entrapment
 - Cause of patients pain
- Conservative treatment
 - Physical therapy
 - Corticosteroid injection
- Surgical resection, neurolysis



Local Anesthetics

Table 4

Comparative Table of LAs

Generic Name	Trade Name	Relative Potency	Protein Binding (%)	pKa Value*	Lipid Solubility	Onset	Duration of Action (min)
Procaine hydrochloride	Novocain	1	5.8	8.9	1.7	Moderate	30–60
Lidocaine hydrochloride	Xylocaine	2	55	7.8	25	Rapid	80–120
Bupivacaine hydrochloride	Marcaine	8	96	8.1	346	Longest (2–10 min)	180–360
Ropivacaine hydrochloride	Naropin	6	95	8.1	115	Moderate	140–200

Corticosteroids

PRODUCT (Chemical Name)	mg/ml	Dosage	POTENCY (When compared w/ Hydrocorti- sone mg to mg)	Hydro- cortisone Equivalency	Route of Admin.	Type	Contains Benzyl Alcohol
Solu-Cortef® (Hydrocortisone Sodium Succinate)	50	See insert	1	50	IM or IV	Rapid Acting Short Duration	NO
Aristospan® (Triamcinolone Hexacetonide)	20	0.25-2 ml	5	100	IA & Soft Tissue	Long Acting	YES
Celestone Soluspan® (Betamethasone Sodium Phosphate & Betamethasone Acetate)	3+3	0.25-2 ml	25	150	IM, IA, IL & Soft Tissue	Both Rapid & Long Acting	NO
Kenalog®-40 (Triamcinolone Acetonide)	40	0.25-2 ml	5	200	IM, IA, IL & Soft Tissue	Long Acting	YES
Depo-Medrol®-40 (Methylprednisolone Acetate)	40	0.25-2 ml	5	200	IM, IA & Soft Tissue	Long Acting	SDV-NO MDV-YES
Depo-Medrol®-80 (Methylprednisolone Acetate)	80	0.25-2 ml	5	400	IM, IA & Soft Tissue	Long Acting	SDV-NO MDV-YES
Dexamethasone Sodium Phosphate	4	See insert	25	100	IM, IV, IA, IL & Soft Tissue	Rapid Acting Short Duration	YES
Dexamethasone Sodium Phosphate PF	10	See insert	25	250	IM or IV	Rapid Acting Short Duration	NO
Solu-Medrol® (Methylprednisolone Sodium Succinate)	40	See insert	5	200	IM or IV	Rapid Acting Short Duration	NO

References

- Ultrasound-Guided Peripheral Nerve Injection Techniques, O. Kenechi Nwawka and Theodore T. Miller
American Journal of Roentgenology 2016 207:3, 507-516