

# HEALTH SERVICES RESEARCH CENTER

EMORY UNIVERSITY SCHOOL OF MEDICINE

## HIRING NOW

### **The Health Services Research Center is Hiring - Apply Now!**

Five Available Positions at the HSR Center

#### Associate Director of Programs

The Health Services Research Center is accepting applications for an Associate Director of Programs position. The Health Services Research Center Associate Director of Programs will direct the strategic planning, development, and implementation of programs. The position involves collaboration with representatives from private, government, and international agencies. Candidates will represent the program in various national and international fora. The Associate Director of Programs will conduct research, design new initiatives, write publishable articles and papers, collaborate with others, and design programs. The position may also involve supervising staff.

#### Senior Program Coordinator

The Emory Department of Surgery seeks an ambitious and self-motivated individual to serve as a full-time senior program coordinator in support of a robust team centered on improving health outcomes through innovative and rigorous scientific research. This position supports the Health Services Research Center and serves as a member of the Transplant Outcomes Research team, which includes a focus on developing pragmatic investigations around healthcare access and quality of care. Candidates should possess a strong interest in the field of public health, epidemiology, or business administration for research.

**Please check out our [website](#) for details on how to apply and for more information on careers in HSR.**

# HEALTH SERVICES RESEARCH CENTER

EMORY UNIVERSITY SCHOOL OF MEDICINE

## HIRING NOW

### **The Health Services Research Center is Hiring - Apply Now!**

#### Post-Doctoral Fellow

The Health Services Research Center is accepting applications for a postdoctoral fellowship position. This position is grant-funded and renewable on an annual basis depending on performance. The fellowship provides formal and informal training in epidemiologic methods, health surveillance data collection, analysis, and dissemination, and practical experience working with community partners across the nation to support a mission to improve access to healthcare.

#### Biostatistician

The Health Services Research Center of the Emory Department of Medicine/Department of Surgery is accepting applications for a Biostatistician position. The candidate would have access to many opportunities to engage with faculty within Emory School of Medicine, Rollins School of Public Health, Georgia Tech, Children's Healthcare of Atlanta, the Emory School of Nursing, and clinical faculty from Grady Hospital and the Atlanta VA. Numerous opportunities exist to participate in research using primary and secondary data, manuscript preparation and writing, and grant writing in a collaborative environment. The candidate would be involved in several NIH-funded projects and would also serve within the HSRC's core to advise on biostatistical consulting.

#### Biostatistician-Emory Temporary Services

This position will be in the transplant surgery research area, and involve the development and analysis of a variety of research data using statistical methods; assisting researchers in developing appropriate study protocols and computer analyses; managing computer systems, writing programs, and training others in the use of systems; providing statistical expertise in the areas of study design and data analysis to investigators/researchers interested in conducting clinical or experimental studies; and more.

**Please check out our [website](#) for details on how to apply and for more information on careers in HSR.**

# HEALTH SERVICES RESEARCH CENTER

EMORY UNIVERSITY SCHOOL OF MEDICINE

## RESEARCH SPOTLIGHT

### Dr. Laura Plantinga



Associate Professor of Medicine in the Division of Renal Medicine & Division of General Medicine and Geriatrics at Emory University School of Medicine

Associate Professor of Surgery in the Division of Transplant Surgery at Emory University School of Medicine

Associate Professor of Epidemiology at Rollins School of Public Health

Dr. Plantinga is recognized for her work on multidisciplinary, patient-centered approaches to improve the quality of care among underserved patients with chronic diseases, including patients with chronic kidney disease (CKD), end-stage renal disease (ESRD), and lupus. Currently, she leads several funded studies that focus on the development of a web-based communication system between hospitals and outpatient dialysis facilities to improve care coordination of dialysis patients, the assessment of aging and the burden of geriatric syndromes in the lupus population, and the examination of the utility and effectiveness of providing patient-friendly reports on functioning to patients and providers in the dialysis and lupus settings.

Her research interests include chronic diseases, epidemiology, health disparities, health services research, and renal diseases. In order to improve care in underserved patient populations, her research also involves collaboration on a variety of studies with Emory investigators in renal medicine, transplantation, geriatrics, rheumatology, hospital medicine, nursing, and epidemiology, as well as investigators outside of Emory. Dr. Plantinga has been an author on more than 100 peer-reviewed manuscripts and is on the Editorial Board of the American Journal of Kidney Diseases. Additionally, she is a Senior Board Member at BMC Nephrology.

# HEALTH SERVICES RESEARCH CENTER

EMORY UNIVERSITY SCHOOL OF MEDICINE

## TUNE IN FOR...

### Health Services Research Center Seminar

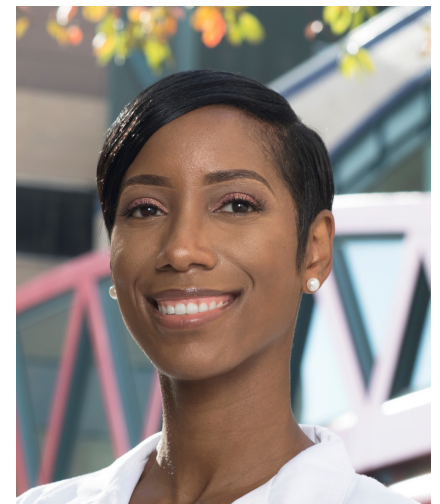
**“Examining the Determinants of Health that Influence Violence and Injury”**

**Speaker: Randi Smith, MD, MPH**

**Wed |09/22/2021 | 2 PM - 5 PM EST**

#### **Objectives:**

1. Participants will be able to identify specific risk and protective factors that impact violence and influence clinical outcomes after trauma
2. Participants will learn specific prevention strategies that address social determinants of health in trauma populations.



Dr. Smith is an Assistant Professor of Surgery and Trauma/Surgical Critical Care at Emory School of Medicine/Grady Memorial Hospital and an Assistant Professor of Public Health at Rollins School of Public Health. She is passionate about injury and violence prevention through hospital-based intervention programs for underserved populations.

#### **Register here:**

<https://zoom.us/meeting/register/tJwsc-quqzMtHtQESDf83JHptV0ZVSI9GSpt>

After registering, you will receive a confirmation email containing information about joining the meeting.

# HEALTH SERVICES RESEARCH CENTER

EMORY UNIVERSITY SCHOOL OF MEDICINE

## TUNE IN FOR...

### The Fourth Wave — Vaccines, Variants, and the Future

COVID-19 Conversations Webinar Series

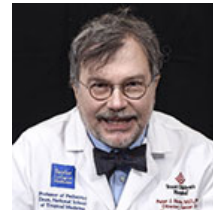
The twenty-first COVID-19 Conversations webinar will provide an update on the current state of COVID-19, focusing specifically on the delta variant, implications for children under the age of 12, what the rise of this highly infectious variant means for vaccinated and unvaccinated adults and adolescents, and what it will take to move past this surge and end the pandemic. The panel discussion will be followed by a Q&A session with the webinar audience.

Wed |09/1/2021 | 5 PM - 6:30 PM EST

#### Expert Panel:



**Esther Krofah**  
(Moderator)  
FasterCures and the  
Milken Institute Center  
for Public Health



**Peter Hotez**  
Baylor College of  
Medicine



**George Rutherford**  
University of California,  
San Francisco



**Mitchell Katz**  
NYC Health +  
Hospitals



**Charlene Wong**  
Duke University  
School of Medicine

Webinar participants can earn 1.5 CPH, CME, CNE, or CHES continuing education credits.

More information and registration information can be found [here](#).



# HEALTH SERVICES RESEARCH CENTER

EMORY UNIVERSITY SCHOOL OF MEDICINE

## TUNE IN FOR...

### 2021 UNC Institute on Implementation Practice Virtual Series: Equitable Implementation In Action

Co-hosted by the Jordan Institute for Families and Collaborative for Implementation Practice at the UNC School of Social Work, the National Implementation Research Network (NIRN), and The Annie E. Casey Foundation.

This event will shine a light on equitable implementation and to engage more deeply with the authors and articles highlighted in the [Stanford Social Innovation Review supplement, \*Bringing Equity to Implementation\*](#), that was released in May 2021.

Register [here](#).

More information can be found [here](#).

**Thurs | 09/30/2021 | 11:00 - 1:00 PM EST**

Participants will have an opportunity to choose among eight breakout sessions featuring conversations with authors of articles highlighted in *Bringing Equity to Implementation*:

- [Youth Leadership in Action](#)
- [Trust the People](#)
- [Community Takes the Wheel](#)
- [Equity in Implementation Science is Long Overdue](#)
- [Listening to Black Parents](#)
- [Faith-Based Organizations as Leaders of Implementation](#)
- [Community-Driven Solutions to Address Hypertension on Chicago's South Side](#)



THE ANNIE E. CASEY FOUNDATION



**NIRN** | NATIONAL IMPLEMENTATION RESEARCH NETWORK  
FRANK PORTER GRAHAM CHILD DEVELOPMENT INSTITUTE



**CIP** Collaborative for Implementation Practice  
UNC School of Social Work

# HEALTH SERVICES RESEARCH CENTER

EMORY UNIVERSITY SCHOOL OF MEDICINE

## TUNE IN FOR..

### 2021 Medical Education Day

Calling all Clinicians, Educators, Scientists, Staff, Students & Trainees  
from EUSOM, NHWSN, and RSPH

The event brings together researchers from all divisions and provides an opportunity to share exciting new findings, facilitate scientific exchange, and identify potential new collaborations.

**Keynote Speaker: Dr. Atsusi Hirumi**  
**Mon | 09/27/2021**

Registration details will be available soon.



Dr. Atsusi "2c" Hirumi is a Professor of Instructional Design and Technology and currently holds a joint appointment with the Department of Learning Sciences and Educational Research in the College of Community Innovation and Education and the Department of Medical Education in the College of Medicine at the University of Central Florida. In the keynote, he will identify key factors that affect change, and the adoption, implementation, and sustenance of innovations. He will also accentuate the need to align fundamental instructional elements and follow basic instructional design principles to realize the potential of innovations to advance health professions education.

# HEALTH SERVICES RESEARCH CENTER

EMORY UNIVERSITY SCHOOL OF MEDICINE

## TUNE IN FOR...

### **When Health Care and Law Enforcement Overlap: Policy and Practice**

Co-sponsored by Penn Medicine Trauma Center, Penn Injury Science Center, and Campaign for Community at the Penn Provost Office.

Virtual Symposium presented by Penn LDI and the Penn Department of Emergency Medicine. Injuries and illnesses requiring emergency medical care often attract responses from law enforcement, and law enforcement officers are frequently present in hospitals. Anyone seeking emergency care might encounter law enforcement in the hospital, but this is particularly true for survivors of violent crime, incarcerated patients, survivors of sexual assault and intimate partner violence, patients experiencing psychiatric emergencies, undocumented immigrants, and individuals with substance use disorders. How do individual health, public safety, legal rights, and ethics intersect? Standardized policies and practices are needed to navigate professional conflicts and balance health and safety concerns.

**Fri |09/24/2021| 1:00 - 5:00 PM ET**

This multidisciplinary symposium will bring together frontline providers, legal experts, health care workers, social scientists, and researchers to explore these issues and expand the conversation on law enforcement and clinical care.

More information and registration information can be found [here](#).



# HEALTH SERVICES RESEARCH CENTER

EMORY UNIVERSITY SCHOOL OF MEDICINE

## TUNE IN FOR..

### **Drug Pricing: Policy and Politics**

Supported by the Charles C. Leighton, MD Memorial Lecture Fund

Virtual Conversation with Benedic N. Ippolito, PhD, Rachel Sachs, JD, MPH, and Mariana Socal, MD, PhD, moderated by Rachel M. Werner, MD, PhD

**Fri |09/17/2021| 12:00 - 1:00 PM ET**

The panelists will discuss the policy options for drug pricing, the appropriate roles of government and markets, and prospects for reform in the current political environment.

More information and registration information can be found [here](#).

### **Asking Better Questions, Making a Bigger Impact: A Changemaker Chat**

Supported by the Charles C. Leighton, MD Memorial Lecture Fund

One of the key areas of opportunity identified by the Paradigm Project Steering Council and Learning Community was to “Ensure HSR is Asking the Right Questions.” This webinar will allow attendees to listen in on a virtual coffee chat between two noted changemakers: Dr. Don Berwick, President Emeritus and Senior Fellow at the Institute for Healthcare Improvement, and Dr. Rebekah Gee, CEO of Healthcare Services at Louisiana State University.

**Wed |09/8/2021| 1:00 - 1:30 PM ET**

More information and registration information can be found [here](#).

# HEALTH SERVICES RESEARCH CENTER

EMORY UNIVERSITY SCHOOL OF MEDICINE

## UPCOMING EVENTS

### 2021 Department of Medicine Research Day

The event brings together researchers from all divisions and provides an opportunity to share exciting new findings, facilitate scientific exchange, and identify potential new collaborations.

**Keynote Speaker: Dr. Kathleen Ann Cooney**  
**Thurs | 10/14/2021 | 8 AM - 5 PM EST**

Register [here](#).



Dr. Cooney is the George Barth Geller Distinguished Professor of Medicine and Chair of the Department of Medicine, Duke University School of Medicine, in Durham, North Carolina. She is a medical oncologist focused on caring for men with prostate cancer and internationally known for investigations examining the genetic epidemiology of prostate cancer.

If you have any questions, please contact Sarah McClellan by email at [DOMresearch@emory.edu](mailto:DOMresearch@emory.edu).

# HEALTH SERVICES RESEARCH CENTER

EMORY UNIVERSITY SCHOOL OF MEDICINE

## UPCOMING EVENTS

### Seventeenth Annual Scientific Session

Surgical Outcomes Club

#### De-Implementation of Low Value Care

This panel will focus on de-implementation, including appropriateness measurement, identification of factors contributing to ongoing unnecessary use of low-value tests or treatments, and interventions/strategies that reduce low-value care.



**ALEX SOX-HARRIS**  
Stanford University



**LOUISE DAVIES**  
Dartmouth Institute for Health Policy & Clinical Practice



**SCOTT REGENBOGEN**  
Michigan Medicine

#### Predictive Analysis and Artificial Intelligence in Surgical Care

This panel will highlight the use of predictive analytics and artificial intelligence in surgical care. Topics will include natural language processing, imaging analysis, and predictive model development, as well as integration of these tools into health care delivery.



**KATIE COLBORN**  
University of Colorado



**ROBERT MEGUID**  
University of Colorado



**RACHAEL CALLCUT**  
UC Davis Health



**GABRIEL BRAT**  
Beth Israel Deaconess Medical Center

Sun | 10/24/2021

Registration to the 2021 Annual Scientific Session will open in early Summer. More information can be found [here](#).

# HEALTH SERVICES RESEARCH CENTER

EMORY UNIVERSITY SCHOOL OF MEDICINE

## UPCOMING EVENTS

### **Building Wealth, Building Health**

Virtual Conversation presented by Penn LDI and supported by the Charles C. Leighton, MD Memorial Lecture Fund. Panelists include Amy Castro Baker, PhD, Lucy Marcil, MD, MPH, and Ioana Marinescu, PhD, moderated by George Dalembert, MD, MSHP.

**Fri | 10/01/2021 | 12:00 PM ET**

The panelists will discuss the evidence surrounding wealth and health, how health care providers can address their patients' financial needs, cash benefits as an alternative to health insurance expansion, and real-world experiences in building wealth as a way to improve health.

Register for the webinar [here](#).

### **Biostatistics, Epidemiology, & Research Design (BERD) Research Forum**

Second annual BERD Research Forum "Advances & Challenges in Mobile Health and High-Frequency Data."

**Fri | 10/22/2021**

**Location: Emory Rollins School of Public Health CNR 1000**

Additional information and registration will be announced soon.

Questions? Contact Cathy Ho (Cathy.Ho@emory.edu)

# HEALTH SERVICES RESEARCH CENTER

EMORY UNIVERSITY SCHOOL OF MEDICINE

## UPCOMING EVENTS

### **Pediatric Research and Career Development Symposium**

Sponsored by the NICHD supported Atlanta Pediatric Scholars Program, K12HD072245

The Annual Pediatric Research and Career Development Symposium showcases the local clinical, basic, and translational research conducted by our fellows and junior faculty at Emory and Children's Healthcare of Atlanta.

**Tues | 10/05/2021 | 9 AM - 6 PM EST**

More Information can be found [here](#).

#### **Keynote Speaker:**

#### **Shannon L. Meeks, MD**

Pediatric Hematologist/Oncologist,  
Program Medical Director of  
Hemostasis/Thrombosis,  
Aflac Cancer & Blood Disorders Center  
Children's Healthcare of Atlanta  
Professor of Pediatrics,  
Emory University School of Medicine



# HEALTH SERVICES RESEARCH CENTER

EMORY UNIVERSITY SCHOOL OF MEDICINE

## UPCOMING EVENTS

### Pathways to Prevention: Improving Rural Health Through Telehealth-Guided Provider-to-Provider Communication

About one-fifth of all people in the United States live in rural areas. These areas experience higher mortality rates, a higher prevalence of diseases, and lower life expectancy than in urban areas. Telehealth-guided communication between care providers has the potential to increase access to services and improve health outcomes in underserved rural populations. However, more research is needed to better understand how provider-to-provider telehealth affects rural patients, populations, health care providers, and payers.

The NIH Pathways to Prevention Workshop: Improving Rural Health Through Telehealth-Guided Provider-to-Provider Communication, sponsored in part by NHLBI, aims to identify research gaps, explore barriers and facilitate successful, sustainable implementation of provider-to-provider telehealth in rural settings. This free workshop, which is open to the public, will be captioned in real-time. Individuals needing reasonable accommodations should contact [NIHP2P@mail.nih.gov](mailto:NIHP2P@mail.nih.gov). Learn more and register at [prevention.nih.gov/P2P-RuralHealth](https://prevention.nih.gov/P2P-RuralHealth).

#### Agendas:

- [Day 1](#)
- [Day 2](#)
- [Day 3](#)

**10/12/2021 | 11:00 AM - 4:05 PM**

**10/13/2021 | 11:00 AM - 4:00 PM**

**10/14/2021 | 11:00 AM - 3:45 PM**

Registration is required. You must register separately for each day you plan to attend to receive a unique meeting link for that specific day.

# HEALTH SERVICES RESEARCH CENTER

EMORY UNIVERSITY SCHOOL OF MEDICINE

## WEBINARS

### Emory School of Medicine Grand Rounds

**School of Medicine Grand Rounds occur every Tuesday from 12PM - 1PM.**

Subscribe to the Grand Round mailing list here:

<https://med.emory.edu/departments/medicine/education/cme-grand-rounds.html>

Archived sessions can be viewed [here](#).

#### **Featured DOM Grand Rounds:**

**5/25/21: "iDoctor: Virtual Care in the Pandemic"**

#### **Speaker:**

Benji Mathews, MD, FACP, SFHM

Chief of Hospital Medicine, Regions Hospital, HealthPartners;  
Associate Professor of Medicine, University of Minnesota Medical  
School

# HEALTH SERVICES RESEARCH CENTER

EMORY UNIVERSITY SCHOOL OF MEDICINE

## WEBINARS

### Department of Surgery Grand Rounds

**Surgical Grand Rounds occur every Thursday from 7AM - 8AM.**

To be added to the email list for the monthly grand rounds schedules, contact Sean Moore, Communications Manager for the Department of Surgery, at [smoore@emory.edu](mailto:smoore@emory.edu).

Surgical Grand Rounds can be viewed remotely at:

- Grady Memorial Hospital, Sherman Conference Room, 3rd floor, Glenn Building
- Emory Johns Creek Hospital, Administrative Conference Room
- Emory Saint Joseph's Hospital, Education Center, Classroom 4
- Emory University Hospital Midtown, Davis Fischer Building, Classroom 3

**Information on upcoming Surgical Grand Rounds can be found [here](#).**

### **Evidence-Based Medicine: Love Your Patients, Love Your Colleagues**

Presented by Deena Chihade, MD

Thurs |9/02/2021

### **Living With One Ventricle**

Presented by Subhadra Shashidharan, MD

Thurs |09/09/2021

### **A Framework for Safe, Reliable and Effective Surgical Care**

Presented by Joe Sharma, MD

Thurs |09/16/2021

### **Updates in Robotic Technology and Training in Surgical Education**

Presented by Ankit Patel, MD

Thurs |09/30/2021



# HEALTH SERVICES RESEARCH CENTER

EMORY UNIVERSITY SCHOOL OF MEDICINE

## CALL FOR PROPOSALS

### SOM I3/WHSC Synergy/ Kaiser Permanente Georgia Research Awards

Kaiser Permanente Georgia, the Emory University School of Medicine (SOM), and the Woodruff Health Sciences Center (WHSC) are collaborating on a special grant cycle. This I3 Synergy KP GA RFP will support collaborative research proposals between Emory and Kaiser Permanente Georgia that address complex and intriguing healthcare and clinical questions vexing our health systems. Kaiser Permanente Georgia provides inpatient care at Emory St. Joseph and Emory University Hospital Midtown as their core hospitals by Permanente physicians.

Specifically soliciting research proposals that focus on the collaborative efforts by Emory Healthcare and Kaiser Permanente Georgia in addressing the two critical health areas of research below. Proposals must demonstrate immediacy and feasibility to execute in less than one year, and have strong potential for external funding potential for a collaborative proposal. Potential areas for proposals include (but are not limited to) healthcare quality, access, safety, outcomes, and/or resource stewardship in the following areas:

#### **Topic 1: PASC (long COVID)**

- Award period 1 year; Each award up to \$75k; Anticipate 1-2 awards
- Soliciting innovative, collaborative research proposals to support health services research with short- or long-range objectives built on creative and potentially transformative ideas related to Post-acute sequelae of SARS-CoV-2 (PASC).

#### **Topic 2: Behavioral Medicine**

- Award period 1 year; Each award up to \$75k; Anticipate 1-2 awards
- Soliciting innovative, collaborative research proposals to support health services research with short- or long-range objectives built on creative and potentially transformative ideas related to Behavioral Medicine. Examples include (but are not limited to): Vaccine hesitancy, behavioral economics, wellness and burnout, suicide prevention, or COVID-19.

**Full proposals are due by 5 p.m. (ET) on October 8, 2021, to the [online application](#).**

**More information can be found [here](#).**

# HEALTH SERVICES RESEARCH CENTER

EMORY UNIVERSITY SCHOOL OF MEDICINE

## GRANT ANNOUNCEMENTS

### **Understanding and Addressing the Impact of Structural Racism and Discrimination on Minority Health and Health Disparities**

This initiative will support observational or intervention research to understand and address the impact of SRD on minority health and health disparities. Projects must address SRD in one or more NIH-designated populations with health disparities in the US and should address documented disparities in health outcomes. It is also expected that projects will collect data on SRD beyond individual self-reported perceptions and experiences to include data at organizational, community, or societal levels. Projects are expected to involve collaborations with relevant organizations or groups of stakeholders. Each of the participating institutes has its own specific criteria and focus.

**Applications are due by 5:00 pm on August 24th, 2021.** Applicants are encouraged to apply early to allow adequate time to make any corrections to errors found in the application during the submission process by the due date.

**For more information on the program and how to apply, please visit the [application website](#).**

# HEALTH SERVICES RESEARCH CENTER

EMORY UNIVERSITY SCHOOL OF MEDICINE

## GRANT ANNOUNCEMENTS

### **NIAID Research Education Program Advancing the Careers of a Diverse Research Workforce (R25 Clinical Trial Not Allowed)**

The NIH Research Education Program (R25) supports research educational activities that complement other formal training programs in the mission areas of the NIH Institutes and Centers. The overarching goals of the NIH R25 program are to: (1) complement and/or enhance the training of a workforce to meet the nation's biomedical, behavioral and clinical research needs; (2) encourage individuals from diverse backgrounds, including those from groups underrepresented in the biomedical and behavioral sciences, to pursue further studies or careers in research; (3) help recruit individuals with specific specialty or disciplinary backgrounds to research careers in biomedical, behavioral and clinical sciences; and (4) foster a better understanding of biomedical, behavioral and clinical research and its implications.

The NIAID encourages applications from applicant organizations that propose innovative courses for skills development, research experiences, and mentoring activities and that focus on factors that have been shown to affect retention of groups nationally underrepresented in biomedical research. Programs that target more than one career stage and/or career transitions for career progression and advancement are strongly encouraged.

**Applications are due by 5:00 pm on September 10th, 2021.** Application budgets are limited to \$325,000 direct costs per year and must reflect the actual needs of the proposed project.

**For more information on the program and how to apply, please visit the [application website](#).**

# HEALTH SERVICES RESEARCH CENTER

EMORY UNIVERSITY SCHOOL OF MEDICINE

## GRANT ANNOUNCEMENTS

### **The Role of Work in Health Disparities in the U.S. (R01 Clinical Trials Optional)**

Although scientific and technological discoveries have improved the health of the U.S. population overall, some populations continue to experience a disproportionate burden of disease and risk factors, unmet health care needs and other adverse health conditions. Work activity is known to be important to health as a source of “exposures and risk factors,” a source of beneficial social and economic resources, and attainment of social position and status. In addition to formal work, under-employment and unpaid and informal work arrangements are also important work activities to understand. While the contribution of work to health outcomes and substantial occupational segregation for populations that experience health disparities are known, few studies have explored to what extent and by what mechanisms work explains health disparities, especially in the contexts of racial and ethnic populations and socioeconomic status. Because work can be modified and is amenable to intervention, the examination of the role of work as a social determinant of health (SDOH) presents an opportunity for research that may illuminate causal pathways and potential solutions for health disparities.

This initiative will support innovative population-based research that can contribute to identifying and characterizing pathways and mechanisms through which work or occupation influences health outcomes and health status among populations with health and/or health care disparities, and how work functions as a social determinant of health

**Applications are due by 5:00 pm on October 5th, 2021.** The earliest date of submission is September 5th, 2021.

**For more information on the program and how to apply, please visit the [application website](#).**

# HEALTH SERVICES RESEARCH CENTER

EMORY UNIVERSITY SCHOOL OF MEDICINE

## GRANT ANNOUNCEMENTS

### **Extramural Loan Repayment Program for Health Disparities Research (LRP-HDR)**

The objective of the LRP-HDR is to recruit and retain highly qualified health professionals into research careers that focus on minority health disparities or other health disparities. The Program serves as an avenue for NIH to engage and promote the development of research and research programs that reflect the variety of issues and problems associated with disparities in health status.

The NIH invites qualified health professionals who contractually agree to engage in NIH mission-relevant research for an average of at least 20 hours each week for at least two years, initially, to apply for an award in the Extramural LRP.

The Extramural LRP repays up to \$50,000 annually of a researcher's qualified educational debt in return for a commitment to engage in NIH mission-relevant research at a domestic, nonprofit, or government entity. Research funding from NIH is not required to participate in the Extramural LRP. LRP awards are based on an applicant's potential to build and sustain a research career.

**Extramural LRP applications will be accepted from September 1 until November 18, 2021. All LRP applications must be submitted electronically using the Application Submission System & Interface for Submission Tracking (ASSIST).**

For additional information on application guidelines and formatting, visit the application [website](#)

# HEALTH SERVICES RESEARCH CENTER

EMORY UNIVERSITY SCHOOL OF MEDICINE

## SPECIAL ANNOUNCEMENT

### **Join Advancing Collaborative Biostatistics at Emory (ACBE)**

Collaborative biostatisticians/data analysts are in positions across Emory University and do not currently have opportunities to meet or share information and advice. The intention is to create an informal group for collaborative biostatisticians/data analysts at Emory to have a community to share ideas, information, and advice and to facilitate our professional development.

**If interested please join Advancing Collaborative Biostatistics at Emory (ACBE) by filling out this Google form:**

[https://docs.google.com/forms/d/e/1FAIpQLSfnx-xbOStBxibNxheiFdB0\\_pX3tYPuvsYZqQuiAIRWIA9Y6w/viewform?usp=sf\\_link](https://docs.google.com/forms/d/e/1FAIpQLSfnx-xbOStBxibNxheiFdB0_pX3tYPuvsYZqQuiAIRWIA9Y6w/viewform?usp=sf_link)

Please note that the group will be most beneficial for biostatisticians/data analysts at any education, any position level, and who work with clinical/medical data in a team science/collaborative capacity the majority ( $\geq 70\%$ ) of the time. However, the group is open to anyone who has an interest and wants to be a part of the community.

**The next meeting will be Thursday, September 16 from 12:00 PM - 1 PM EST.**

# HEALTH SERVICES RESEARCH CENTER

EMORY UNIVERSITY SCHOOL OF MEDICINE

## SPECIAL ANNOUNCEMENT

### Grant Wise Consults

The new Georgia CTSA Grant Wise service offers the opportunity for one to receive one-on-one feedback and support with grant writing from experienced senior faculty. This resource is available to faculty of institutions within the Georgia CTSA (Emory University, Georgia Tech, Morehouse School of Medicine, and the University of Georgia). All grant types are welcome to submit a request for guidance.

#### Receive support with:

- Developing a timeline
- Reviewing Specific Aims
- Writing/editing the text
- Responding to reviewers

Requests can be submitted to the [online form](#).

# HEALTH SERVICES RESEARCH CENTER

EMORY UNIVERSITY SCHOOL OF MEDICINE

## RESEARCH RESOURCES

### Coronavirus Checker

C19 Checker website: <https://c19check.com/start>

Data collection is ongoing and includes users' symptoms, risk factors for COVID-19, and country/zip code. In addition, longitudinal data has also been collected on a cohort of users. To request to use the data, please email Griselda McCorquodale at [gmccorq@emory.edu](mailto:gmccorq@emory.edu) with a brief sentence about intended usage. In response, we will grant access and send out the data usage agreement form.

### Access to the COVID-19 Data Analytics Platform

Researchers studying COVID-19 can now access an innovative new analytics platform that contains clinical data from the electronic health records of people who were tested for coronavirus or who have had related symptoms. As part of NCATS National COVID Cohort Collaborative (N3C) Data Enclave, the data within this source will help scientists study COVID 19 and answer clinically important questions about COVID-19 that they could not have answered previously, including potential risk factors, protective factors, and long-term health consequences.

**More information and how to submit access requests can be found here:**  
<https://ncats.nih.gov/news/releases/2020/access-to-N3C-COVID-19-data-analytics-platform-now-open>



# HEALTH SERVICES RESEARCH CENTER

EMORY UNIVERSITY SCHOOL OF MEDICINE

## RESEARCH RESOURCES

### Episheet

Spreadsheets for the Analysis of Epidemiologic Data: <https://rtihs.org/episheet>

Episheet is a spreadsheet workbook that evolved from a collection of programs for first-generation programmable calculators (Epidemiologic Analysis with a Programmable Calculator, by Kenneth J. Rothman and John D. Boice, Jr.) It comprises various analyses for epidemiologic data, including confounding control by stratification of rate data, risk data, and case-control data, study size and power computation, standardization, analysis of matched case-control data, analysis of seasonal trends, computation of exact confidence limits for selected measures, meta-analysis, and more. The file is free to download and share.

# HEALTH SERVICES RESEARCH CENTER

EMORY UNIVERSITY SCHOOL OF MEDICINE

## WHAT ARE WE READING?



[Making A Collective Impact In A Public Health Crisis: Recommendations For Grantors And Practitioners](#)

[Estimated Mortality Increases During The COVID-19 Pandemic By Socioeconomic Status, Race, And Ethnicity](#)



[Implementation Science: Taking a Comprehensive Approach to the Economic Evaluation of Health Interventions](#)



[NIH-Wide Strategic Plan, Fiscal Years 2021-2025](#)



[Social Justice Is Not the COVID-19 Vaccine Alone: It Is Addressing Structural Racism Through Social Policies That Shape Health](#)

[To Save Lives, We Need to Improve the Measurement of Death](#)

[The Mask of Unequal Health and Excess Death: A Reality](#)



[Confronting the Delta Variant of SARS-CoV-2, Summer 2021](#)

[Updated Guidance on the Reporting of Race and Ethnicity in Medical and Science Journals](#)

[Evaluation of a Clinical Decision Support Strategy to Increase Seasonal Influenza Vaccination Among Hospitalized Children Before Inpatient Discharge](#)



[Updating and Validating the Charlson Comorbidity Index and Score for Risk Adjustment in Hospital Discharge Abstracts Using Data From 6 Countries](#)

# HEALTH SERVICES RESEARCH CENTER

EMORY UNIVERSITY SCHOOL OF MEDICINE

## SELECT RECENT PUBLICATIONS

### From Emory Health Services Research Center

1. Khullar OV, Wei JW, Wagh K, et al. Preoperative Lung Function Is Associated With Patient-Reported Outcomes After Lung Cancer Surgery. *Ann Thorac Surg.* 2021;112(2):415-422. doi:10.1016/j.athoracsur.2020.09.016
2. Cutrer WB, Spickard WA 3rd, Triola MM, et al. Exploiting the power of information in medical education. *Med Teach.* 2021;43(sup2):S17-S24. doi:10.1080/0142159X.2021.1925234
3. Liu JY, Perez SD, Balch GG, et al. Elderly Patients Benefit From Enhanced Recovery Protocols After Colorectal Surgery. *J Surg Res.* 2021;266:54-61. doi:10.1016/j.jss.2021.01.050
4. Turgeon MK, Lee RM, Keilson JM, et al. Is there a difference in utilization of a perioperative treatment approach for gastric cancer between safety net hospitals and tertiary referral centers?. *J Surg Oncol.* 2021;124(4):551-559. doi:10.1002/jso.26554
5. Harding JL, Perez A, Patzer RE. Nonmedical barriers to early steps in kidney transplantation among underrepresented groups in the United States [published online ahead of print, 2021 Jul 23]. *Curr Opin Organ Transplant.* 2021;10.1097/MOT.0000000000000903. doi:10.1097/MOT.0000000000000903
6. Johnson TM 2nd, Goode PS, Hammontree L, et al. An Exploratory Analysis of Tamsulosin for Overactive Bladder (OAB) in Men With Varying Voiding Symptom Burden. *Urology.* 2021;153:42-48. doi:10.1016/j.urology.2021.01.022

### National Health Services Research

1. Galea S, Ettman CK. Expanding the boundaries of health services research [published online ahead of print, 2021 Aug 11]. *Health Serv Res.* 2021;10.1111/1475-6773.13716. doi:10.1111/1475-6773.13716