



EMORY
UNIVERSITY
SCHOOL OF
MEDICINE



Department of Family
and Preventive Medicine

Monthly News: July 2022

55 Words from the Chair



Ted Johnson, MD, MPH

In July, summer weather reminds us to slow down. Our department wellness expert offers suggestions to make the most of our vacations (take them!). See picture proof that leaving work and taking time away brings us joy. We return to

work refreshed and renewed, ready for a new academic year of service, education, and research.

Welcome to the FPM Family!





Above left: **Dr. Julie Degele's** twins (Luca and Hannah) arrived Friday, July 29th at 2:12 and 2:18 pm.

Above right: **Patricia Woodard's** new granddaughter Brooklyn Gisette Christian arrived Wednesday, July 27 at 7:20 am.

New Staff Members



Emi Grill, MPH is the Senior Program Coordinator for the Emory Farmworker Project and community outreach in the PA Program. She lived in Washington, D. C. for six years for school and work, but she is originally from Atlanta and returned to get her MPH from Rollins. During her time at Rollins, she engaged in community health work with the COVID-19 Outbreak Response Team, helping to schedule events with our community partners

and educate community members about COVID vaccines. The vaccine clinics also provided the opportunity to meet several faculty and students from the PA Program who joined the events as the clinical team providing

vaccinations. She is excited to be staying at Emory and joining the team at the PA Program.



Kennedy Baskin is a recent graduate from Emory University where she received a Bachelor of Science in Neuroscience and Behavioral Biology with a minor in Film and Media Studies. She has plans to attend medical school in the future with interests in emergency medicine, pediatrics, and oncology. One fun fact about her is that she is a third-degree black belt in Tae Kwon Do!

Wellness Corner

Making the Most of Vacation

“Happiness consists of living each day as if it were the first day of your honeymoon and the last day of your vacation.” – Leo Tolstoy

According to the U.S. Travel Association, Americans throw away around 768 million vacation days each year. As summer comes to a close and we share our vacations, we can reflect on how important vacations are for our [health](#) and [well-being](#).

How to get the most bang from our vacations:

- Incorporate healthy activities into your vacation: Although we love to indulge on our vacations, building in opportunities for healthy behaviors can increase our enjoyment and prolong the benefits. For example, one recent [study](#) compared people in 3 groups - those who went on a 10-day vacation (only), those who went on a 10-day meditation retreat, and those who went on a 10-day vacation in which they informally practiced meditation. There were no differences between the groups in terms of fatigue or well-being immediately after the vacation – all 3 groups benefited. However, the differences were clear 10 weeks later: those who went on the meditation retreat and on vacations-with-meditation sustained the increased well-being and reduced fatigue. Those in the vacation-only group did not.
- Use it as a chance for connection: It's no secret that human health and well-being depends on our connection with others. Although Ernest Hemingway told us to “never go on trips with anyone you do not

love,” it is clear that vacations – and post-vacation sharing – are a primary way that we connect with family, friends, and even with strangers. In fact, we often [underestimate](#) how much joy we will get from connecting with strangers. Lots of research shows that leisure and vacation is important for relationship and [family](#) well-being.

Stay tuned for more tips next month!

Making the Most of Vacation, Illustrated

Our faculty and staff work hard and we all deserve quality time with family and friends to recharge. Here are a few ways we enjoyed our summer!

[More pictures to come in next month's newsletter so send yours in today if you haven't already!](#)

*Below: **Jenny Mascaro** and her family visiting the Dominican Republic.*



Below: **Jodie Guest** and her daughter riding horses in Arizona.



Below: **Ambar Kulshreshtha** and his family touring Yellowstone National Park (thankfully they visited just before the flooding).



Below: **Miranda Moore** and her family celebrating at her daughter's ballet recital



Below: **Leigh Partington** and her husband tasting wine in an Italian vineyard



Below: **Susy Alfonso** and her husband posing with new friends during their 7th mission trip to Hogar Immanuel, an orphanage for children with catastrophic brain injury.



Below: **Reia Toombs** got married in Cancun, Mexico. Congratulations and best wishes, Reia!



Below: **Porsha Clayton** and her son getting ready to cheer for the Braves!



Below: **Tina-Ann Thompson** hiking close to home on a beautiful day at Stone Mountain



Below: **Leslie Johnson** and her family enjoying their Zoo Atlanta membership



*Below: **Ted Johnson** and his wife relaxing on vacation in LA.*



Below: **Rick Goodman** encountering wildlife in the Galapagos Islands



Below: In addition to visiting Machu Picchu and the Galapagos Islands with a University of Michigan alumni group, **Rick Goodman** and his wife walked the 109-mile Cleveland Way in northern England. Here they are at the end of their trek.



Transformative Research

Recent and Upcoming Presentations

Dr. Cross on Hospice Admissions, Stigmas, and Structure



Podcast mp3

link: <https://media.transistor.fm/a5ec84fa/98c14e32.mp3>

Podcast link from the website:

<https://hospicechaplaincy.transistor.fm/s1/98>

Dr. Guest on Interprofessional Education

Dr. Jodie Guest was the plenary speaker at the Interprofessional Education for Collaborative Practice (IPEC) Interprofessional Leadership Development Program in June.



Highlighted Opportunities:

Call for Abstracts - DOM Research Day, October 27!

[2022 Research Day Call for Abstracts](#)

Deadline: Monday, August 22 at 11:59 p.m. EDT. Late submissions will not be accepted.

The Department of Medicine is now [accepting abstracts](#) for the 15th annual Research Day, to be held Thursday, October 27 from 8 a.m. to 5 p.m. Currently, they are planning to hold the event in-person at the Emory Student Center (subject to Emory Pandemic Operating Status).

FPM faculty are welcome to submit abstracts. There is a limit of two abstracts per presenting author.

For questions about Research Day, please contact [Sarah McClellan](#).

Support for Early Career Faculty

The graphic features a dark blue background on the left with the 'hhmi' logo and the program name 'Freeman Hrabowski SCHOLARS PROGRAM'. Below this, it states 'Accepting applications for 2023 Competition'. On the right, a light grey background contains three key statistics: '\$8.6m POTENTIAL SUPPORT PER SCHOLAR', 'Up to 30 SCHOLARS EVERY OTHER YEAR', and '10 years POTENTIAL APPOINTMENT PER SCHOLAR'. A vertical column of five overlapping circles in shades of green and blue is positioned between the two background sections.

hhmi

Freeman Hrabowski
SCHOLARS PROGRAM

—
Accepting applications
for 2023 Competition

\$8.6m
POTENTIAL SUPPORT
PER SCHOLAR

Up to 30
SCHOLARS EVERY
OTHER YEAR

10 years
POTENTIAL APPOINTMENT
PER SCHOLAR

HHMI is seeking creative and innovative early career faculty for our new Freeman Hrabowski Scholars Program. We are looking for outstanding basic researchers, **including physician-scientists**, who have strong potential to become leaders in their fields and to advance diversity, equity, and inclusion through their mentorship and understanding of the experiences of trainees from races and ethnicities underrepresented in US science. **Applications are due by September 28, 2022 at 3 pm.** More details on eligibility and application are available [here](#).

CME Opportunities

An in-depth look at the practice of death by neurologic criteria:

- History
- Legal Aspects
- Medical Challenges
- Case Studies
- Cultural Considerations
- Ethics
- Organ Donation

CLICK HERE TO REGISTER OR SCAN THIS CODE



SPEAKERS:

PAUL DESANDRE, DO
Chief of Service
Palliative and Supportive Care
Grady Health System

APRIL GRANT, MD
Assistant Professor of Surgery
Emory University
Trauma/Surgical Critical Care
Grady Memorial Hospital

CASEY HALL, MD, MAT
Director of Quality, Division of Neuroscience Critical Care, Medical Director, Neuroscience Critical Care Unit, Emory University Midtown

BRIAN KIBBE, PHD
Clinical Ethicist
Wellstar Health System

NICOLE MOULDER, ANCP-BC
Nurse Practitioner, Trauma & Acute Care Surgery
NE Georgia Health System

TOMMY THOMAS, MD
Asst. Professor, Emory University
Neurocritical Care Intensivist,
Grady Memorial Hospital

WENDY WRIGHT, MD, JM
Associate CMO, Chief of Neurology
Emory University Midtown

CLARK KENSINGER, MD
Surgical Director of Kidney & Pancreas Transplantation
Piedmont Transplant Institute
Associate Medical Director, LifeLink of Georgia

JACKIE KRAFT, MD
Assistant Professor
Neurology/Neurosurgery
Neurocritical Care Intensivist
Emory University Hospital

ERINE RAYBON-ROJAS, MD
Program Director, Director of Diversity & Inclusion for GME, Critical Care Intensivist,
Northeast Georgia Health System

ADAM WEBB, MD
Chief Quality Officer, Neuroscience
Critical Care, Associate Professor of
Neurology, Neuroscience and
Pediatrics, Emory University Hospital



2022

Southeast Regional
**BRAIN DEATH
VIRTUAL CME
SYMPOSIUM**

October 6th,
8am - 3:15pm

SPONSORED BY:



*6.5 hours CME credit
*Nursing contact hours offered



Recent Publications

Collaborative department publications

Palliative Medicine faculty Dr. Dio Kavalieratos and Dr. Jane Lowers published. [Primary palliative care for heart failure provided within ambulatory cardiology: A randomized pilot trial.](#) *Heart Lung.* 2022 Jul 18;56:125-132. doi: 10.1016/j.hrtlng.2022.07.002. Online ahead of print.

Faculty publications

Dr. Mo Ali:

[Diabetes And The Fragmented State Of US Health Care And Policy.](#) *Health Aff (Millwood).* 2022 Jul;41(7):939-946. doi: 10.1377/hlthaff.2022.00299. Epub 2022 Jun 27.

[Evaluating Natural Experiments that Impact the Diabetes Epidemic: an Introduction to the NEXT-D3 Network.](#) *Curr Diab Rep.* 2022 Aug;22(8):393-403. doi: 10.1007/s11892-022-01480-1. Epub 2022 Jul 22.

[Longitudinal evidence on treatment discontinuation, adherence, and loss of hypertension control in four middle-income countries.](#) *Sci Transl Med.* 2022 Jul 6;14(652):eabi9522. doi: 10.1126/scitranslmed.abi9522. Epub 2022 Jul 6. PMID: 35857627

[Nutritional Counseling of Stroke Patients by Neurology Residents, a Call to Action.](#) *Front Neurol.* 2022 Jul 11;13:940931. doi: 10.3389/fneur.2022.940931. eCollection 2022.

Dr. Leslie Johnson:

[Effects of a lifestyle intervention on depression and anxiety among adults at risk for diabetes in India: A secondary analysis of the Kerala Diabetes Prevention Program - PubMed \(nih.gov\)](#) *Preventive Med*, 162:107172. doi: 10.1016/j.jpmed.2022.107172.

Dr. Ted Johnson:

[Perioperative Mobile Telehealth Program for Post-Prostatectomy Incontinence: A Randomized Clinical Trial.](#) Goode PS, Johnson TM 2nd, Newman DK, Vaughan CP, Echt KV, Markland AD, Kennedy R, Van Arsdalen KN, Rais-Bahrami S, Issa MM, Barnacastle S, Wright KC, McCabe P, Malone MP, Redden DT, Burgio KL. *J Urol*. 2022 Aug;208(2):379-387. doi: 10.1097/JU.0000000000002697. Epub 2022 Apr 7. PMID: 35389239 Clinical Trial.

Dr. Dio Kavalieratos:

[Associations between demographic characteristics and unmet supportive care needs in adults with cystic fibrosis.](#) *BMJ Support Palliat Care*. 2022 Jul;12(e2):e281-e284. doi: 10.1136/bmjspcare-2019-001819. Epub 2019 Aug 31.

[Clinicians' Perceptions of Collaborative Palliative Care Delivery in Chronic Kidney Disease.](#) *J Pain Symptom Manage*. 2022 Aug;64(2):168-177. doi: 10.1016/j.jpainsymman.2022.04.167. Epub 2022 Apr 11.

Being of Service

2021 Clinical Distinctions for FPM-DOM Faculty Day & Graham

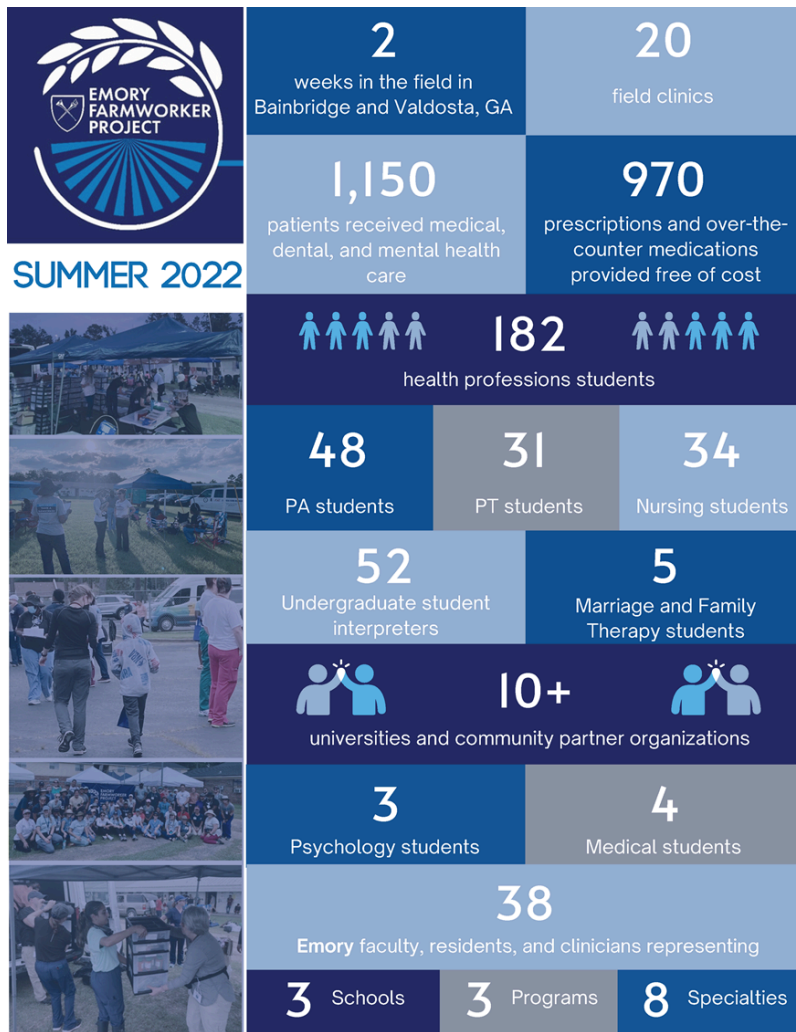
Congratulations to the following FPM faculty who were recognized in the Department of Medicine as part of the School of Medicine's Clinical Distinctions program. Each clinical distinction title recognizes our high-performing, clinically-focused faculty for their dedicated efforts to clinical excellence and patient care.

Below: **Senior Physicians - Dr. Kevin Day (Hospital Medicine) and Dr. Antonio Graham (Geriatrics & Gerontology)**





**Emory Farmworker Program
(EFP) Update:
Summer 2022 By the Numbers**



Dr. Guest strengthens EFP Partnerships

Dr. Jodie Guest met with the Consulate General of Mexico and the ED of the United Farmworker Foundation to continue our partnership to provide the best care for agricultural workers in GA.

Below: The Consulate General tweeted about the meeting



Javier Diaz de Leon



1d · 👤

We're always looking to strengthen and amplify partnerships with those who work to improve conditions of Mexican agricultural workers in GA, and all the US. Without them, no food on the table in Georgia.

[#essentialworkers](#) [#HeroesWorkHere](#)

@ConsulMexAtl se reunió con representantes de @ufwfoundation capítulo Georgia y con [Jodie Lynn Otte Guest](#), Directora del proyecto de @EmoryRollins por la salud de los [#trabajadoresagrícolas](#).



Guest providing expertise on Monkeypox while continuing COVID work



Dr. Jodie Guest has been invited to joined Mayor Andre Dickens' Task Force for Monkeypox. As host of Emory's Health Videos, which have mostly centered on COVID-19 for the past two years, Dr. Guest has created a new video "[Monekypox: What You Need to Know.](#)" Below are helpful infographics on monkeypox.

Dr. Guest has also received foundation funding to support her work providing the COVID-19 vaccine to communities experiencing homelessness.

LET'S TALK ABOUT MONKEYPOX



WHAT IS MONKEYPOX?

- A disease caused by infection with the Monkeypox virus
- Part of the same family of viruses as orthopoxviruses, the virus that causes smallpox
- The type of monkeypox found in the U.S. is rarely fatal
- It is not related to chickenpox

Monkeypox can spread between animals and people. Although the first human outbreak in the U.S. in 2003 was from rodents and pet prairie dogs, this outbreak is from human to human spread due to intimate contact, mostly sexual. Household contacts are also at risk unless precautions are taken. People have tested positive for Monkeypox across various ages, genders, sexual orientations, and more.



TRANSMISSION & PREVENTION OF MONKEYPOX

AVOID THE ACTS BELOW TO PREVENT MONKEYPOX TRANSMISSION



Direct contact with the infectious rash, scab, or bodily fluids



Participating in activities such as kissing, cuddling, or sex with someone that has an infectious rash



Touching items that previously touched the infectious rash or body fluids

THOUGH ANYONE CAN TEST POSITIVE FOR MONKEYPOX, THE FOLLOWING COMMUNITIES ARE AT HIGHER RISK AND SHOULD TAKE EXTRA PRECAUTION:

- Men who have sex with men
- People who are aware that one of their sexual partners in the past 2 weeks has been diagnosed with monkeypox
- People who had multiple sex partners in the past 2 weeks in an area with known monkeypox



TREATMENT & VACCINES FOR MONKEYPOX

AT HIGH RISK?

- If you were identified by public health officials as a contact of someone with monkeypox
- One of your sexual partners in the past 2 weeks has been diagnosed with monkeypox
- If you had multiple sex partners in the past 2 weeks in an area with known monkeypox



THINK YOU HAVE MONKEYPOX?



- If you have suspicious symptoms, stay home and call your care provider
- Isolate at home if you have a rash, call your health provider or the health department to arrange to get tested
- When isolating in a space with other people, educate them about how to stay safe. Confine yourself to a space not used by others. Do not share eating utensils. Wear a mask and cover any sores with a bandage when around others. Wipe down communal surfaces with Clorox/Lysol wipes. Wash your hand with soap and water.

SHOULD YOU GET VACCINATED?

Vaccination is recommended as soon as possible for people who have been exposed to Monkeypox and people who are at higher risk of being exposed to Monkeypox.

For more information on receiving a vaccination, please contact your primary care physician, or local health department.

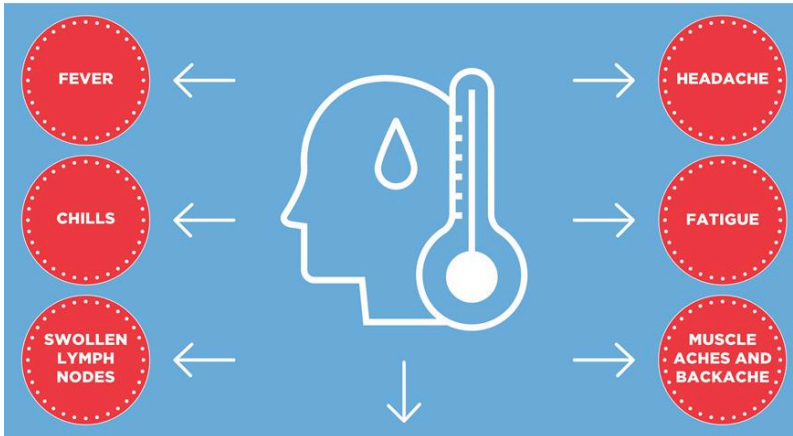


WHAT TREATMENT IS AVAILABLE?

TPOXX is a treatment for monkeypox that your care provider can get from the CDC if you become sick.



SIGNS & SYMPTOMS OF MONKEYPOX



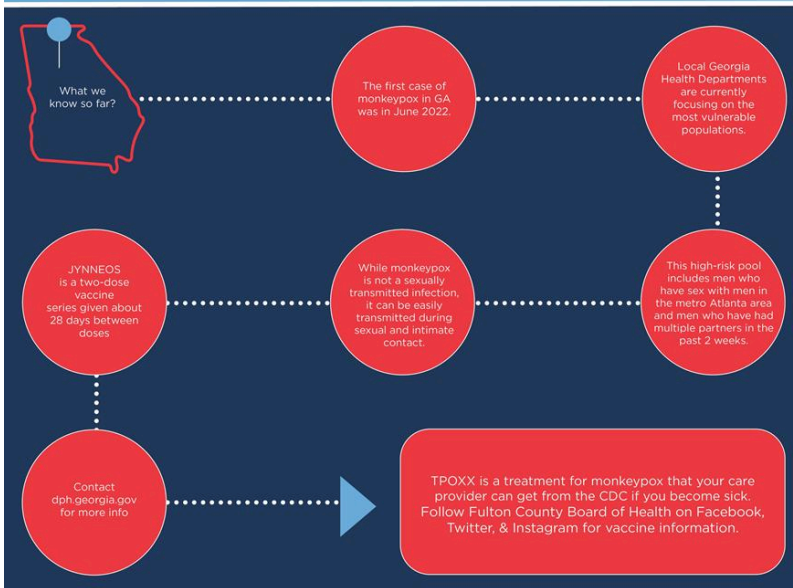
RASH

Can look like pimples or blisters that appear on the face, inside the mouth, and on other parts of the body, like the hands, feet, chest, genitals, or anus. Rash changes over time, may start as pimples, progress to blisters, pus-filled sores, ulcers that finally scab over. Rash is infectious until scabs fall off and there is healthy intact skin underneath.

If you are experiencing any of these symptoms, please contact your Clinician.



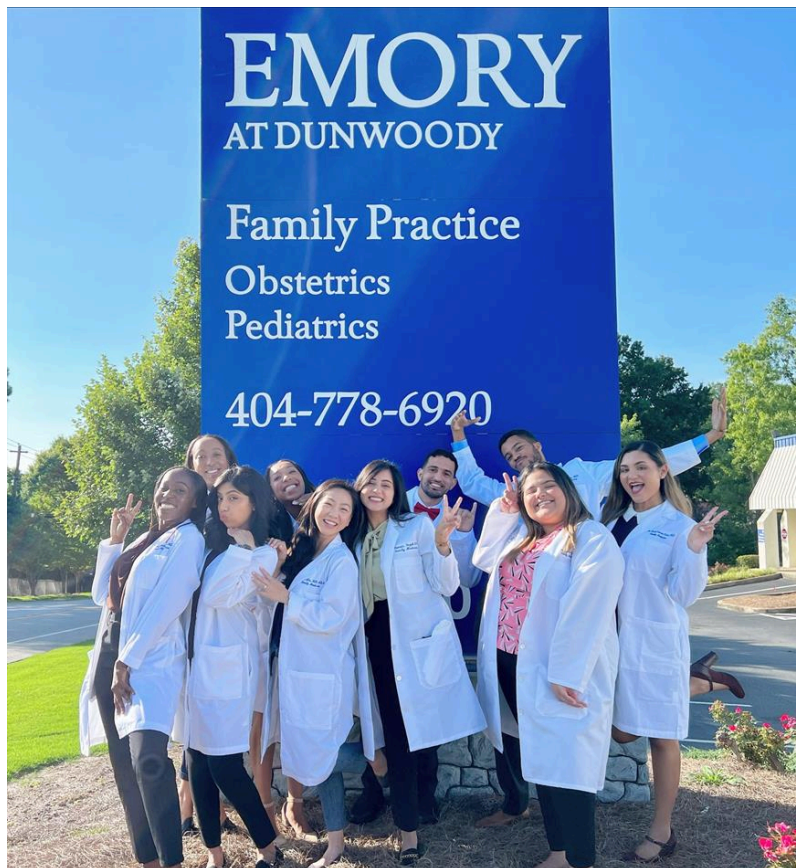
MONKEYPOX IN GEORGIA



Educational Investments for our future

Welcome to the new Family Medicine Residents!

Below: Class of 2025 from left to right: **Dr. Maria Onatunde, Dr. Tichelle Nyrako, Dr. Anjali Amalean, Dr. Alanna Meadows, Dr. Sophie Lin, Dr. Hanain Fazal, Dr. Luis Roman Sanchez, Dr. Matthew Young, Dr. Carolina Huertas Ayala, Dr. Karla Garcia Ortiz**



New PA Students Arrive on Campus!



The PA Program has started its academic year by welcoming 54 new students (Class of 2024).

Physician Assistant Class of 2024 By the Numbers

- # of students 54
- Male 15%, Female 85%
- Diversity = 24%
- Advanced Degree = 1%
- Dual Degree MPH-PA = 3
- Veterans = 1%
- Average age: 25.8 (20 - 41)

- GPA
- Total 3.73
- Science 3.74
- Health Care Experience: 4996 hrs
(Range 2009 – 15,300)
- Humanitarian vol. 610 hrs
(Range 0 – 5.337)
- GRE
- Verbal 152
- Quant 150
- Analytical 4.3

Dr. Smith attends AAFP conference

Dr. Ryan Smith with John Chancellor and Charlie Lane, 2 Emory M4's applying to Family Medicine residency, out to dinner while at the AAFP National Conference in Kansas City.



**News from the DEI
Council**



Roe v. Wade Listening Session COMING SOON

Virtual Listening Session: Roe v. Wade

The FPM DEI council will be hosting a listening session to hear your concerns and comments on the recent Supreme Court ruling on Roe v. Wade. Watch your inbox for more details.

[Emory Mental Health Resources](#) (scroll down to Quick Links)

In Case You Missed It: Inaugural FPM DEI Grand Rounds

The first FPM DEI Grand Rounds was held on Monday, August 1, at 6 pm. Speaker Ildemaro J.

González, MBA presented “**Disparities in Patients with Limited English Proficiencies.**”

In case you missed it, you can watch the recording [here](#).

A few highlights: 21% of the U.S. population does not have high English proficiency. From 2021-2022, 2,200 Emory patients were either LEP (limited English proficiency) or deaf (EUHM, EUH, ESJ, and EJCH). The top 3 languages that were interpreted were Spanish (60%), Vietnamese (7%), and Korean (6.8%). Emory Healthcare conducted approximately 67,000 phone and video interpretation calls and 4,400 in-person interpretations.

The use of professional medical interpreters decreases errors and length of stay and improves patient outcomes. Professional medical interpreters can overcome barriers of language as well as address cultural nuances and gaps in health literacy. Mr. González gave clear examples of how using family members or untrained persons as interpreters can result in misinformation and misunderstanding, sometimes with tragic results.

Further Reading:

[“Effects of Limited English Proficiency and Physician Language on Health Care Comprehension”](#)

[“Language proficiency and adverse events in US hospitals: a pilot study”](#)

Combatting Medical Mis/DisInformation

Emory General Internal Medicine faculty Dr. Tracey Henry was recently interviewed on the **DEI SHift Podcast**. Dr. Henry discusses what constitutes medical misinformation and disinformation, the psychological factors that drive their spread, and ways we can combat them in healthcare and clinical practice. Listen to the podcast [here](#).

Further Reading in DEI

Song, Z., Chokshi, D. A., & Press, M. J. Primary Care and Financial Risk-Navigating the Crossroads. *The New England journal of medicine*.

Liu, M., Sandhu, S., & Keuroghlian, A. S. Achieving the Triple Aim for Sexual and Gender Minorities. *The New England journal of medicine*.

Lazzarini, Z. (2022). The End of Roe v. Wade—States' Power over Health and Well-Being. *New England Journal of Medicine*.

Sabin, J. A. (2022). Tackling Implicit Bias in Health Care. *New England Journal of Medicine*.

Ansell, D. A., James, B., & De Maio, F. G. (2022). A Call for Antiracist Action. *New England Journal of Medicine*.

Upcoming Opportunities:

THURSDAY, AUGUST 18TH
NOON-1:00 P.M.

UPDATE FORUM: COMMUNITY ENGAGEMENT, EQUITY, AND INCLUSION

Save the date to join us for updates on SOM diversity, equity, and inclusion initiatives and strategic priorities.

Presented by:

Sheryl Heron, MD, MPH

Associate Dean for Community Engagement,
Equity and Inclusion / Chief Diversity and
Inclusion Officer

[Register](#) for the SOM Update Forum. *Open to all faculty, staff, learners and alumni.*

National Hispanic Heritage Month

Emory SOM is seeking self-nominations and/or peer nominations of faculty and staff members who identify with this group and are willing to share their stories. [Submit a nomination](#). Contact somdei@emory.edu with questions.

NATIONAL HISPANIC HERITAGE MONTH

In our commitment to an inclusive environment at Emory, it is our goal to build a culture that recognizes the contributions of all individuals-including those who come from underrepresented groups.

While we recognize the work of our diverse community year round, we are organizing our initial efforts through focused affinity month celebrations to promote sharing, awareness, and learning.

We are seeking self-nominations and/or peer nominations of faculty members and staff members who are willing to share their stories for **National Hispanic Heritage Month**. Nominations will be accepted on a rolling basis (see nomination form for deadlines.)

Contact somdei@emory.edu if you have questions.

Other Affinity Months:

Black History Month
(Feb.)

Women's History Month
(March)

Arab-American Heritage Month
(April)

**National Asian American and
Pacific Islander Heritage Month**
(May)

LGBTQ+ Pride Month
(June)

National Hispanic Heritage Month
(Sept.)

**National Disability Employment
Awareness Month**
(Oct.)

**National Native American
Heritage Month**
(Nov.)

SOM DEI Ongoing Programs

Don't miss out on all that's going on. View the [DEI Calendar](#).

- [Affinity Month celebrations](#)
- [Anti-Racism Resources](#)
- [Racism & Social Justice Webinar Series](#)
- [Unconscious Bias Education Program](#)
- [URiM and Women Faculty Speakers Bureau](#)

News from the Faculty

Development Committee

Save The Date: AAMC Mid-Career Women Faculty Leadership Development Seminar

Hyatt Regency Indian Wells, CA Dec 6-9, 2022.
[Applications opening](#) early August.

Kern Fellowship Applications due August 8

More information [here](#)



WOODRUFF HEALTH
EDUCATORS ACADEMY PRESENTS

THE KERN FELLOWSHIP IN INTERPROFESSIONAL LEADERSHIP

The Kern Fellowship in Interprofessional Leadership, co-sponsored by the Woodruff Health Educators Academy and the Kern Foundation, is a 9-month program for health sciences educators and practitioners who want to be effective change agents in the post COVID era. The program focuses on developing the high-level professional and relational abilities necessary to create interprofessional leadership and professionalism at the individual and organizational level, along with joyful practice, resilience, team functioning, and collaboration. The program targets high-level professional development in faculty leaders as a vital component of addressing a wide range of challenges including educational and practice reforms related to community norms and standards, interprofessional collaboration, and organizational leadership.

ELIGIBILITY

Participants will be early to mid-career educators from any of the Emory health sciences schools, centers, programs, or practice sites who are dedicated to and passionate about educating students, trainees, faculty, or others, and who would like to enhance their leadership skills. At least two years of educational experience preferred with positional authority to influence instruction, curricular programs, and/or interprofessional collaborative practice; support of administrative unit is required.

IMPORTANT DATES:

- Applications due no later than August 8th
- Participants will be notified by August 17th
- Workshops and sessions: Approximately every two weeks beginning early in September through the end of May (at a time and place convenient for the group members – in person or virtual)

APPLICATION:

We will select 10-12 promising interprofessional leaders who commit to attend bi-monthly sessions for 9 months, and who are likely to contribute to education of students, trainees, and others within their institutions.

More information at:

<http://whsc.emory.edu/education/whea/ipl-fellowship/index.html>

Questions? Email cabraha@emory.edu

Got news? Please send your
announcements and photos to
leigh.partington@emory.edu.

The DFPM newsletter is
published monthly.



EMORY
UNIVERSITY
SCHOOL OF
MEDICINE

Department of Family
and Preventive Medicine

Department of Family and Preventive Medicine
Emory University School of Medicine
1841 Clifton Road, NE, 5th floor
Atlanta Georgia 30329

You are receiving this email because you are part of Emory University
Department of Family and Preventive Medicine.

[Preferences](#) | [Unsubscribe](#)