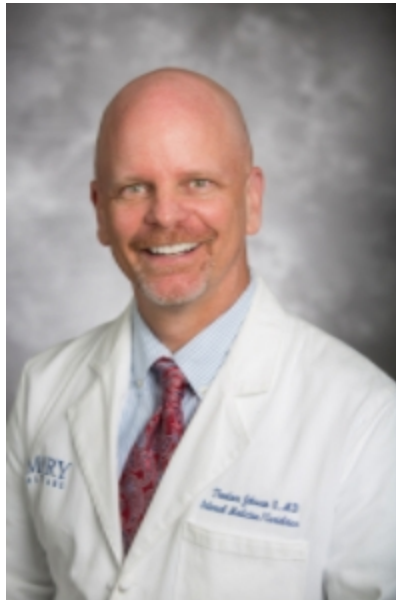




EMORY
UNIVERSITY
SCHOOL OF
MEDICINE

Department of Family
and Preventive Medicine

April 2019



Ted Johnson, MD, MPH


Just 55 Words from the Chair:

Convocation and commencement. Start and finish. Does it seem too soon to be near year end? Yet here we are. Learners' complete programs. Trainees find jobs. Academic time marches forward. In this newsletter, we proudly present our next postgraduate medical trainee program classes, celebrate our faculty's scholarly presentations, and embark on important clinical service missions.

Educational investments for our future


Fresh from the Match!

The Department of Family and Preventive Medicine and its **Family Medicine Residency Program** are pleased to welcome the incoming Class of 2022:



Department of Family
and Preventive Medicine

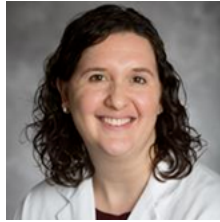
Emory Family Medicine Class of 2022

 Bernadette Baker Texas Tech University School of Medicine	 Emma Cronk Ross University School of Medicine	 Rodina Merchant University of South Carolina School of Medicine	 Cassandra Mooney Ross University School of Medicine	 David Neuberger Eastern Virginia Medical School
 Ify Nweme American University of Antigua College of Medicine	 Lorrie Russell University of South Carolina School of Medicine	 Pooja Sharma Ross University School of Medicine	 Ateisha Taylor University of Florida College of Medicine	 Rabia Zia Allama Iqbal Medical College

The Department of Family and Preventive Medicine and its **Preventive Medicine Residency Program** are pleased to welcome their **three** incoming residents:



Chioma Erundu, MD: Dr. Erundu earned her baccalaureate degree from the University of Pennsylvania, and her MD degree from Duke University School of Medicine. She presently is completing her residency in obstetrics and gynecology at Baylor College of Medicine (Houston, Texas) in its Department of Obstetrics and Gynecology. During her current OB/GYN residency, she has pursued interests in public health and preventive medicine by participating in a rotation at HHS' Agency for Healthcare Research and Quality that was sponsored by the Association for Prevention Teach and Research.



Sara Turbow, MD, MPH: Dr. Turbow earned her baccalaureate degree from Washington University in St. Louis, Missouri, and her MD and MPH (concentration in Epidemiology) degrees from Emory University's School of Medicine and Rollins School of Public Health, respectively. She also completed her residency in Internal Medicine at Emory. Board-certified in Internal Medicine, she is an Assistant Professor in Emory's Department of Medicine and, since 2015, has served as a Primary Care Center Attending at Grady Memorial Hospital where other appointments include serving as General Medicine Ward Attending, Hepatitis C Clinic Attending, Health Diet and Lifestyles Class Attending, and Resident Ambulatory Curriculum Director.

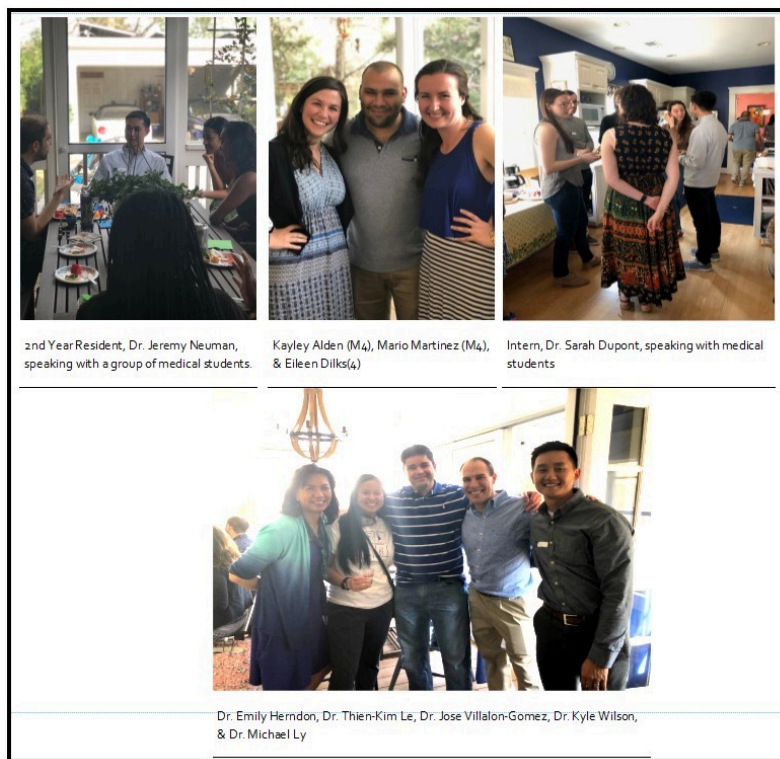


Sandra Valenciano, MD, MPH is a graduate of Brown University, the Boston University School of Medicine, and the Tulane School of Public Health and Tropical Medicine. Board-certified in Internal Medicine, Dr. Valenciano completed a residency in Internal Medicine Primary Care at the Yale-New Haven Hospital. She currently is completing two years of training in applied epidemiology in CDC's Epidemic Intelligence Service Program where she works on bacterial respiratory disease issues. Her broad interests include population / public health, patient care, and research. Dr. Valenciano is fluent in Spanish and French, and has capability in Italian.

The Family Medicine Interest Group (FMIG) hosted their 6th Annual FMIG Meet and Greet at the home of **Emily Herndon, MD** on Sunday, March 24. This event celebrates M4 medical students who matched into Family Medicine and offers a networking opportunity for M1 – M3 year medical students. We encourage students to learn more about Family Medicine by conversing with the M4 medical students, department faculty, community preceptors, and residents. The student participation was amazing this year! One student said, “I had a really great time. It felt like home here and I learned so many new things about Family Medicine.” Congratulation to our three matches:

- Kayley Alden – Tacoma Family Medicine, Tacoma, WA
- Eileen Dilks – Fort Belvoir Community Hospital, Fort Belvoir, VA
- Mario Martinez – CoxHealth, Springfield, MO

Pictures from the FMIG Meet and Greet below:



Being of Service



South Georgia Is Calling...

Preceptors Needed for South Georgia Farmworker Health Project

June 8-20

Calling all Physicians! Please consider joining us as a preceptor for a week or a few days as we provide Emory's signature level of care to migrant and seasonal farmworkers and their families in the rural farming communities of Bainbridge and Lake Park, Georgia. Now in its 24th year, the Emory PA Program's **South Georgia Farmworker Health Project (SGFHP)** serves as an example of interprofessional training and practice for the School of Medicine community and allows us to combine teaching about the social determinants of health with the provision of compassionate, primary care medicine to a vulnerable patient population – migrant farmworkers.

All that is required is your expertise, stethoscope, and the desire to help train PA, MD, DPT and other health professions students who volunteer with us. This transformational experience will help you recharge

while you mentor learners in an energetic and collaborative team-based learning environment.

Please click [here](#) to see the description of the preceptor responsibilities. **For more information, contact Erin Lepp, PA-C elepp@emory.edu.**

Pictured above: Evening SGFHP clinic outside of Bainbridge GA, June 2018.

*Pictured below: **Emily Herndon, MD**, Small Group Advisor for the Osler Society and Co-Director of the Adult Primary Care Clerkship, has been a dedicated SGFHP Preceptor for over 15 years, volunteering for a week each summer.*



**PA Students Celebrate National
Farmworker Awareness Week and Prepare
for June Outreach**

In honor of **National Farmworker Awareness Week (March 25-31)**, first year Emory PA students rolled up their sleeves and began to assemble the 2,000 personal care kits that will be distributed to migrant and seasonal farmworkers during the Emory Program's upcoming South Georgia Farmworker Health Project (SGFHP) which will take place June 8-21. At the end of their medical visit with the PA or MD student and preceptor, each farmworker patient will receive assorted toiletry items, work gloves, and protective eyewear. Through a generous "Be the CHANGE" grant awarded to the Emory PA Program by the nccPA Health Foundation, we are able to provide patients with a new pair of cotton socks to prevent foot infections that farmworkers are at risk of developing because they often stand in wet fields for many hours.

Want to help? We need additional new personal-sized toiletry items including shampoo, soap, disposable razors, toothpaste, toothbrushes, deodorant, washcloths, combs, mouthwash, and sunscreen. Consider collecting these items now through **June 1** and we will arrange for pick-up of your donations and assemble them for our farmworker patients!

For more information, please e-mail **Javar White** javar.white@emory.edu or **Erin Lepp, PA-C** elepp@emory.edu

Pictured below: Emory PA students holding new pairs of cotton socks, purchased through a "Be the CHANGE" grant from the nccPA Health Foundation and "Got Food? Thank a Farmworker" t-shirt and toiletries pack.



Every year, Emory School of Medicine faculty member **Karen Newell, MMSc, PA-C, DFAAPA**, and her private lesson percussion students put together a fun, entertaining, advocacy fundraising concert for the South Georgia Farm Worker Health Project. The theme this year will be “T-Rex” and will include

percussion ensemble selections played on common household items, such as plastic buckets and wooden dowels, as well as drum sets and other percussion instruments. The event will take place on Sunday, **June 2** at 4:00 pm at The Central DeKalb Senior Center at 1346 McConnell Drive, Decatur, 30033. The event is FREE but Physician Assistant (PA) students will be selling "Got Food? Thank a Farmworker" T-shirts (*pictured above*) and collecting monetary donations. For pictures and video of last years' performance please click [HERE](#) for video and [HERE](#) for photos.

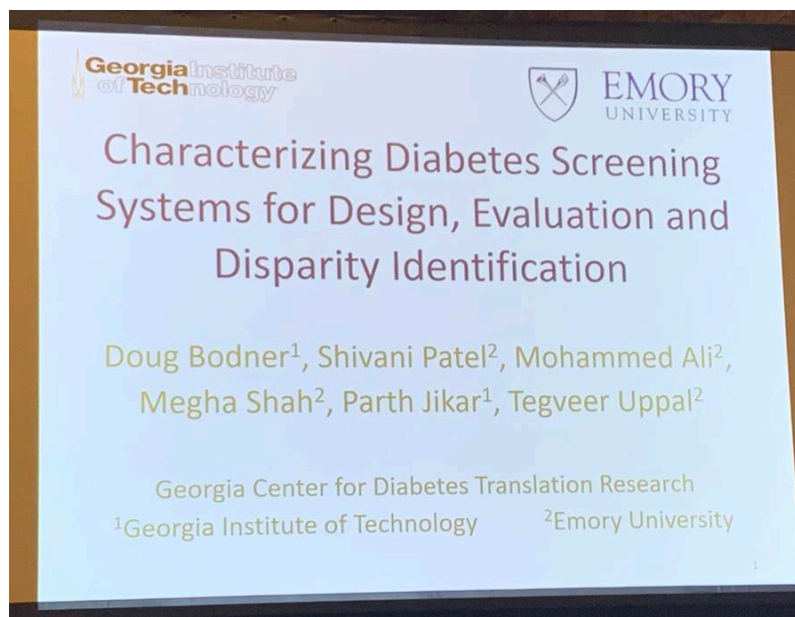


Transformative Research

Med student Kayley Alden and faculty mentor **Jennifer Mascaro, PhD**, following Kayley's Georgia Clinical & Translational Science Alliance Conference presentation on "The Impact of App-Delivered Mindfulness on Healthcare Trainee Well-Being." The presentation focused on early, positive results of a randomized trial of structured mindfulness app use versus a waitlist control in Emory residents and PA students.

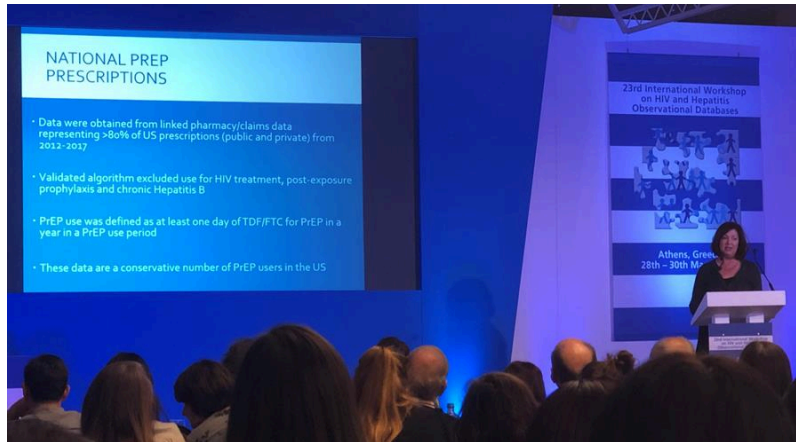


Congratulations to the winners of the [Georgia Clinical and Translational Science Team Science Award of Distinction for Early Stage Research Teams](#): Characterizing Diabetes Screening Systems for Design, Evaluation and Disparity Identification, an Emory and GT collaboration including **Megha Shah, MD** and **Mohammed Ali, MBChB, MSc, MBA**!



Jodie Guest, PhD, MPH presented the world debut of data showing the first 6 years of PrEP use in women in the US at the International Workshop on HIV and Hepatitis Observational Databases in Athens, Greece on March 29, 2019. The data show a striking lack of

PrEP in women in the South where HIV incidence rates are the highest.



**Family Medicine Residency Research
Symposium
May 9
Emory University Hospital Midtown
conference room**

Schedule

8:00 am Breakfast and Introductions (and set up of AV for broadcasting)

8:30 am Afua Akhi-Gbade, MD, "Implementation of multi-disciplinary teams to provide comprehensive care for type 2 diabetes population in a primary care clinic setting"

8:45 am Blair Funk, MD, "An evaluation of diabetic patient preferences for communications, recommendations, and resources at a residency continuity clinic"

9:00 am Daniel Ralston, MD, "TBD"

9:15 am Mohammed Ali, MBChB, MSc, MBAI, "Gaps in diabetes preventive services in the U.S.: Data from the National Health Interview Survey, 2016-7"

9:30 am **Miranda Moore, PhD**, "Opportunities for systematic cognitive screening limited by wide variations in penetration of Medicare-funded preventive visits"

9:45 am **NongLin Mel, MD**, "Disseminated Coccidiomycosis in the Southeast"

10:00 am **KEYNOTE ADDRESS.** *Anne Gaglioti, MD, FAAFP, Associate Professor of Family Medicine at Morehouse School of Medicine.* "Holding the Spaces Between: Connection as the Foundation of Primary Care Research and Practice"

10:45 am **BREAK**

11:00 am **Brock Vanderbush, MD**, "Patient beliefs and attitudes associated with influenza vaccination in a primary care clinic"

11:15 am **Megha Shah, MD**, "TBD"

11:30 am **Hunter Davis, MD**, "A rare case of male hypogonadism"

11:45 am **Jennifer Mascaro, PhD**, "TBD"

Research Resources

[EvaluATE](#) does nice [webinars](#) and handouts (archived on their site) that walk through thinking about and planning a program evaluation. They also have a nice "learners guide" to creating logic models, in case a funder is requesting one.

Department of Medicine publishes a weekly newsletter called **What's UP in DOM Research**.
Subscribe [HERE](#):

Evidence of our Awesomeness!

Publications and Presentations:

Drowos J, Emerson J, Herndon E, Moore M, Villalon-Gomez J, Clayton P, Stumbar S. [Maintenance of certification pilot for community preceptors](#). 2019 Southern Group on Educational Affairs Regional Conference. Orlando FL, March 2019 (oral presentation)

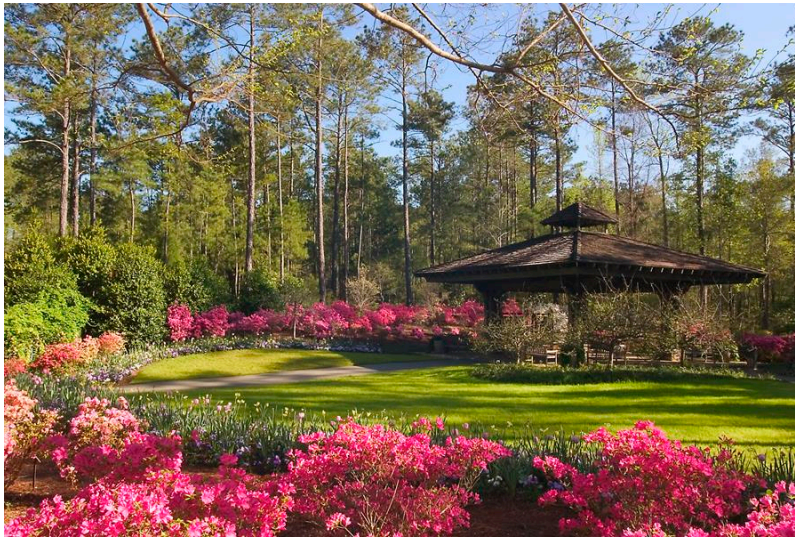
[Gastric cancer mortality rates among US and foreign-born persons: United States 2005–2014](#).

Hallowell BD, Endeshaw M, Senkomago V, Razzaghi, H, McKenna, MT, Saraiya M. *Gastric Cancer* (2019).

Background: Historically, foreign-born individuals in the US have had an elevated risk of dying from gastric cancer when compared to US-born individuals. This is primarily due to factors that occur prior to their immigration to the US, including diet and underlying risk of *H. pylori* infection.

Conclusion: Efforts directed at reducing the prevalence of gastric cancer risk factors could help reduce the elevated burden observed among foreign-born individuals and US-born minority groups.

Don't miss events!



**The Department of Family Medicine
is proud to present the 3rd Annual
Southeast Review and Update on
Medical Care of Older Adults**

July 12-14, 2019

Callaway Gardens

Information / Registration

**Deans' Pop-Up: Promising Strategies to Promote
Faculty Excellence**

The Office of the Provost is pleased to partner with the Rollins School of Public Health and the Nell Hodgson Woodruff School of Nursing to present the second Deans' Pop-Up, "**Promising Strategies to Promote Faculty Excellence**," on April 15, 12:00-2:00pm. The event will be held in the Lawrence P and Ann Estes Klamon Room, found on the 8th floor of the Claudia Nance Rollins Building of the Rollins School of Public Health. More information is available in the attached invitation. Register by clicking [here](#). Please register by **Monday, April 8**. Deans' Pop-Ups are designed to convene faculty from a variety of schools and research areas across

the university and to provide a sample of the type of programming and cross disciplinary exchange that will be facilitated by an eventual [faculty club](#), planning for which is underway.

HIV and Aging: From Mitochondria to the Metropolis. Online registration ends **April 5**. Rates will be higher at the door! **April 11-12**. Emory University. Read more [here](#) .

REGISTRATION OPEN!
REGISTER TODAY
VISIT WWW.HIV-AGING.ORG
FOR INFORMATION OR TO REGISTER!

APRIL 11-12, 2019
Courtyard Marriott
Decatur, GA
Conference Theme:
Special Populations Aging with HIV
visit www.hiv-aging.org for information

ONLINE REGISTRATION OPEN!
Register on-line before 3/29/19 at 12:00 Noon
Rates will be higher at the door!

A TRANSLATIONAL SCIENCE MEETING FOCUSING ON
SPECIAL POPULATIONS AGING WITH HIV/AIDS...

CONFERENCE KEYNOTE

CHARLES A. EMLET, PH.D., LCSW, ACSW
PROFESSOR, UNIVERSITY OF WASHINGTON, TACOMA
AGING WITH PRIDE: NATIONAL HEALTH, AGING, AND SEXUALITY/GENDER
STUDY (NHAS)
AGING WITH PRIDE: IDEA (INNOVATIONS IN DEMENTIA
EMPOWERMENT AND ACTION)

Visit www.hiv-aging.org for more information and to register!

Emory Primary Care Consortium provides grants up to \$2,500 to support any project that involves research, quality improvement, advocacy, development of clinical decision support tools, or educational activities in support of advancements in primary care (as it relates to patient safety, innovations in healthcare delivery, addressing disparities in healthcare, etc.). The next deadline for

application submission is **April 15**. Awardees will be announced by May 15. More information available [here](#).

WHSC Educators Salon, Monday **April 15**, 5:30 pm - 7:30 pm in the Woodruff Health Sciences Center Administration Building (WHSCAB) Plaza. Educators Salon is a chance for educators from across the Woodruff Health Sciences Center to mingle, nibble, and enjoy a talk by an engaging science educator. Our guest this month is innovative and entertaining educator Lew Lefton, PhD, Co-Founder, Applied Humor Associates. Does humor help support learning? Can improv comedy make you a better communicator? How many educators does it take to change a light bulb? We invite you to join us for a unique, fun, and interactive gathering where you'll have an opportunity to play, think, and learn about various approaches to the use of humor in education. Enjoy light refreshment and networking as well. Click [here](#) to RSVP or visit the [website](#) for additional details.

9th Annual Bettye Rose Connell Memorial Lecture.
April 23, Miller-Ward Alumni House. 5:15 pm: wine and hors d'oeuvres. 6 pm: lecture with reception to follow. Speaker: Patricia A. Parmelee, PhD.
"Depression and Quality of Life in Late Life Chronic Illness: Findings from the EQUAL Study." Register [here](#).

THE 9TH ANNUAL BETTYE ROSE CONNELL MEMORIAL LECTURE

TUESDAY, APRIL 23
MILLER-WARD ALUMNI HOUSE
5:15 - 6 P.M. WINE & HORS D'OEUVRES
6 P.M. LECTURE, WITH RECEPTION TO FOLLOW

*"Depression and Quality of Life in Late Life Chronic Illness:
Findings from the EQUAL Study"*



Speaker:

Patricia A. Parmelee, PhD

Director, Alabama Research Institute on Aging
Professor, Department of Psychology
The University of Alabama

To register, visit <http://bit.ly/BRC-2019>

This event is sponsored by Emory University School of Medicine, Emory Primary Care Consortium, Veterans Affairs' (VA) Center for Visual and Neurocognitive Rehabilitation, and VA Geriatric, Research, Education and Clinical Center.



Georgia CTSA's Community Engagement 4th Biennial Forum. April 25-26. One Georgia: Building Bridges to Improve Quality Access for Optimal Health.

Atlanta Technical College - Dennard Conference Center. 1560 Metropolitan Parkway. The Forum is intended for health professionals, community-based organizations/members, those in academia and others who wish to come and share ideas, strategies, and innovations in research, policy, and practice for improving the health and health status of Georgians. More information available [here](#).

Society of Teachers of Family Medicine Annual Spring Conference. April 27-May 1. Toronto, Ontario, Canada. Read more [here](#).

Emory Quality Conference. May 2, 1 pm - 3 pm.
WHSCAB auditorium. Keynote speaker, Dr. Gary Kaplan, Chairman and CEO of Virginia Mason Medical Center. Registration required. Poster registrations due: April 8, 2019. Click [here](#) to register your poster.

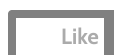
Georgia Clinical & Translational Science Alliance 6th Annual Health Services Research Day, May 15, 8 am - 3 pm. Emory University School of Medicine. This symposium and networking opportunity gives researchers a chance to learn about ongoing quality, effectiveness, and value-based research activities across the state of Georgia. Register [here](#). Agenda and more information available [here](#).

National LGBTQ Health Conference: Bridging Research and Practice. May 31-June 1. Emory University. Additional information and registration [here](#) .

Got news? Please send your announcements and photos to leigh.partington@emory.edu. The DFPM newsletter is published on the first Friday of each month.

Department of Family and Preventive Medicine
Emory University School of Medicine
1841 Clifton Road, NE, 5th floor
Atlanta Georgia 30329

You are receiving this email because you are part of Emory University
Department of Family and Preventive Medicine.



Forward

[Preferences](#) | [Unsubscribe](#)