

# LIFE AS AN EMORY PA STUDENT

By GH Frankel  
Data Collected by H. Perona



## AVERAGE DISTANCE STUDENTS COMMUTE

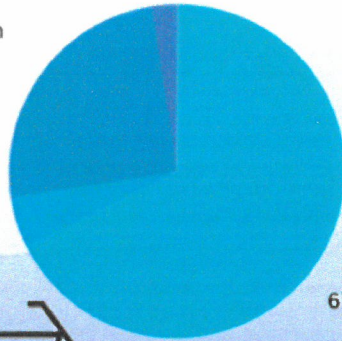
- 7 students - <2 miles
- 15 students - 2-3 miles
- 2 students - 3-4 miles
- 4 students - 4-5 miles
- 3 students - 5-6 miles
- 5 students - > 6 miles

Public Transportation  
25%

Bike  
5%



Heelies  
2.5%



Car  
67.5%

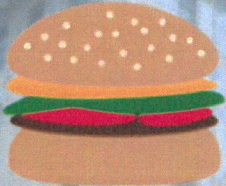
## What do Students do for Fun?

- YOGA/PILATES/RUNNING
- NETFLIX
- SPENDING TIME WITH FAMILY AND PETS
- EXPLORING ATLANTA
- READING
- HIKING AND SPENDING TIME OUTSIDE



97% of students bring their lunch to school!

ON AVERAGE STUDENTS EAT AT A RESTAURANT



1.5

TIMES PER WEEK

IN TOTAL STUDENTS IN OUR CLASS HAVE:

5



HUMAN CHILDREN

21



PETS (NON-HUMAN CHILDREN)

## STUDY TIPS

- Go Over Power Points
- Re-Watch Lectures
- Flashcards (Quizlet)
- Videos (Osmosis)
- Study with a Friend!



15

## HOURS SPENT

3.15 studying each night

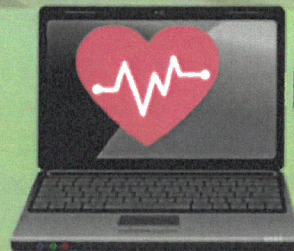


10

5

0

Cardio Pulm Anatomy Deirm IPA eme/Onc Ethics



STUDENTS USE

mac > pc  
TO TAKE NOTES



## GROCERIES

- Trader Joe's | Kroger | Dekalb Farmer's Market | Whole Foods | Sprouts

1ST YEAR PA STUDENTS GET

6.83 hours of sleep on average per night



**EMORY**  
UNIVERSITY  
SCHOOL OF  
MEDICINE

Physician Assistant Program

1462 Clifton Rd NE Suite 280  
Atlanta, GA 30322  
(404) 727-7825 (General Info)  
(404) 727-7857 (Admissions)  
[www.emoryPA.org](http://www.emoryPA.org)



“The program emphasizes evidence-based primary care and preventive medicine, the provision of health care to the medically underserved and utilization of information technology to achieve these goals. The Program promotes team care, patient advocacy and the delivery of primary health care for all patients.”

**Application Process**

1. Complete the on-line CASPA application. Include:
  - a. Original Transcripts.
  - b. 3 Letters of Recommendation.
  - c. GRE Scores. (Institution Code 0459)
2. Complete Emory's Supplemental Application.
3. Submit a \$75.00 Application Fee (nonrefundable).

Application Deadline  
**September 1<sup>st</sup> Apply early!**

**Admissions Requirements**

1. Baccalaureate degree from a regionally accredited institution.
2. 3.0 cumulative & science GPA.
3. GRE within the last 5 years.
  - a. 153 Verbal
  - b. 144 Quant
  - c. 4.0/6.0 Writing
4. Min. 2000 hours patient care experience.
5. Statistics, Biology + lab, General Chemistry I & II + lab, Anatomy + Physiology I & II + lab, Organic or Biochemistry.

**Class of 2021 Stats**

- Applications received: 917
- Candidates interviewed: 154
- Students accepted: 54
- 75% Female, 25% Male
- Avg age: 27.4 (22-40)
- Avg GPA/sGPA 3.60/3.58
- Avg GRE:
  - o 155 Verbal
  - o 153 Quant
  - o 4-3 Writing
- Avg HCE: 6,465 (2,048-27,872)
- Avg volunteer hrs: 2,106 (80-22,050)

**Annual Cost of Attendance**

Tuition &	
Fees	\$45,899
Books & Supplies	\$ 3,657
Parking	\$ 672
Living Expenses	\$25,224
Health Insurance	\$ 3,466
<b>Total</b>	<b>\$79,918</b>